



schumacher formula

# Instruction Manual



**Schumacher**

[racing-cars.com](http://racing-cars.com)

## Additional Items Required



2S Shorty  
Li-Po Battery



SK-100149  
SKY RC e680 AC/DC 80W Charger



CORE RC Paint  
CR600 to CR631  
CR666 to CR672

CR522 CORE RC  
Pro Tyre Glue + 2 Nozzles

Tyres and Inserts



Soldering Iron  
CR266 40w  
CR275 80w

U3107 - Solder

AM701011 - Low Profile 4mm Connector 24K - pk2  
AM701012 - Low Profile 5mm Connector 24K - pk2



CR115  
CORE RC Silicone Wire 12AWG Red/Black/Blue 50cm



CR233  
Piston Drilling Kit  
1.1-1.8mm (8 bits)

AM190003 Reamer With End Cap For Lexan Body

U4229 Steel Spanner - 5.5mm/3.9mm

CR044 Curved Body Scissors

AM150155 Nut Driver 5.5 (M3)  
AM150170 Nut Driver 7.0 (M4)



AM110115 Allen Wrench 1.5  
AM110120 Allen Wrench 2.0  
AM110125 Allen Wrench 2.5  
AM110130 Allen Wrench 3.0



Schumacher Racing stocks and distributes the following manufacturers products and full product listings are available on our website at [www.racing-cars.com](http://www.racing-cars.com)

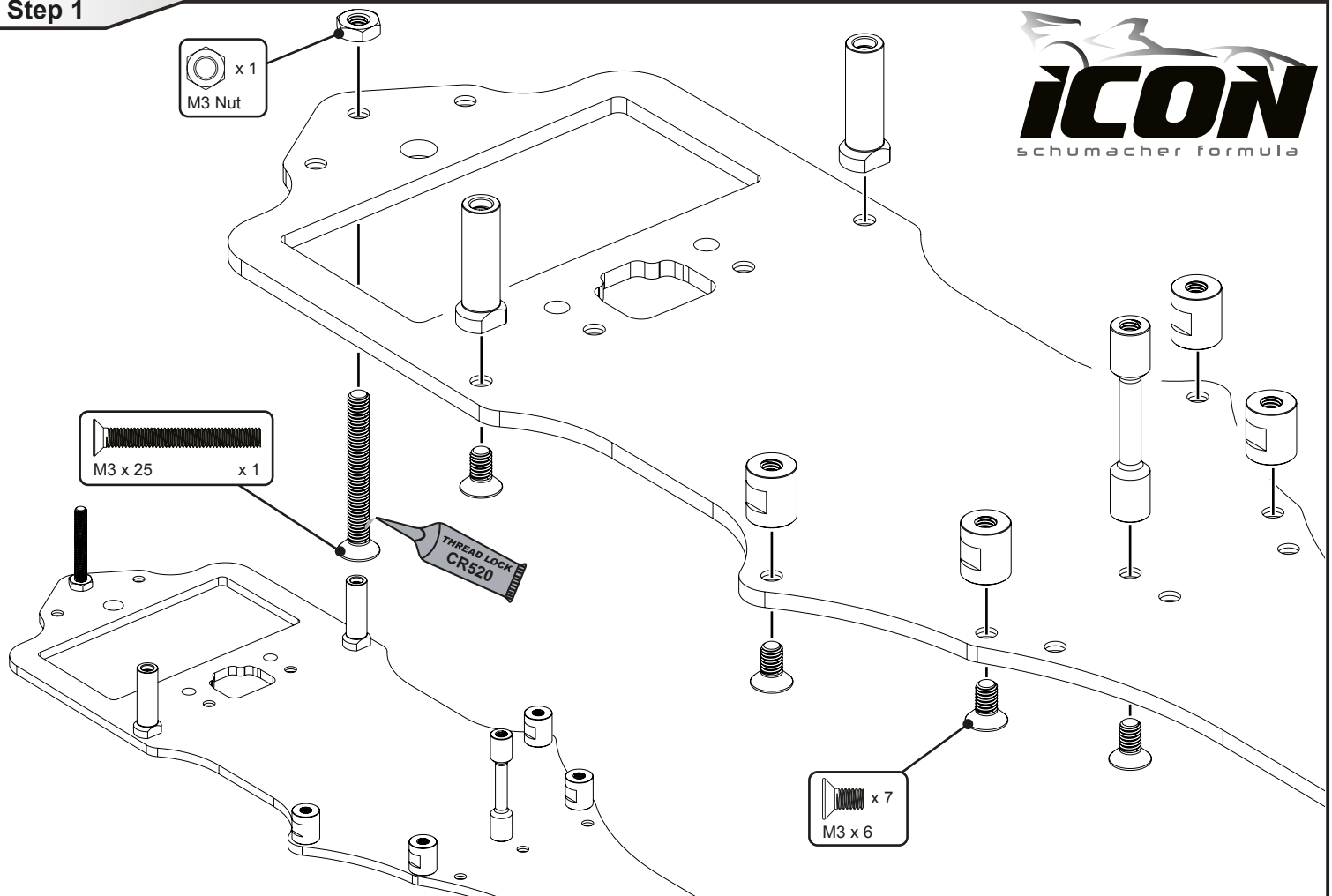
PLEASE NOTE THAT SOME OF THE PRODUCT RANGES BELOW ARE ONLY AVAILABLE IN THE UNITED KINGDOM.



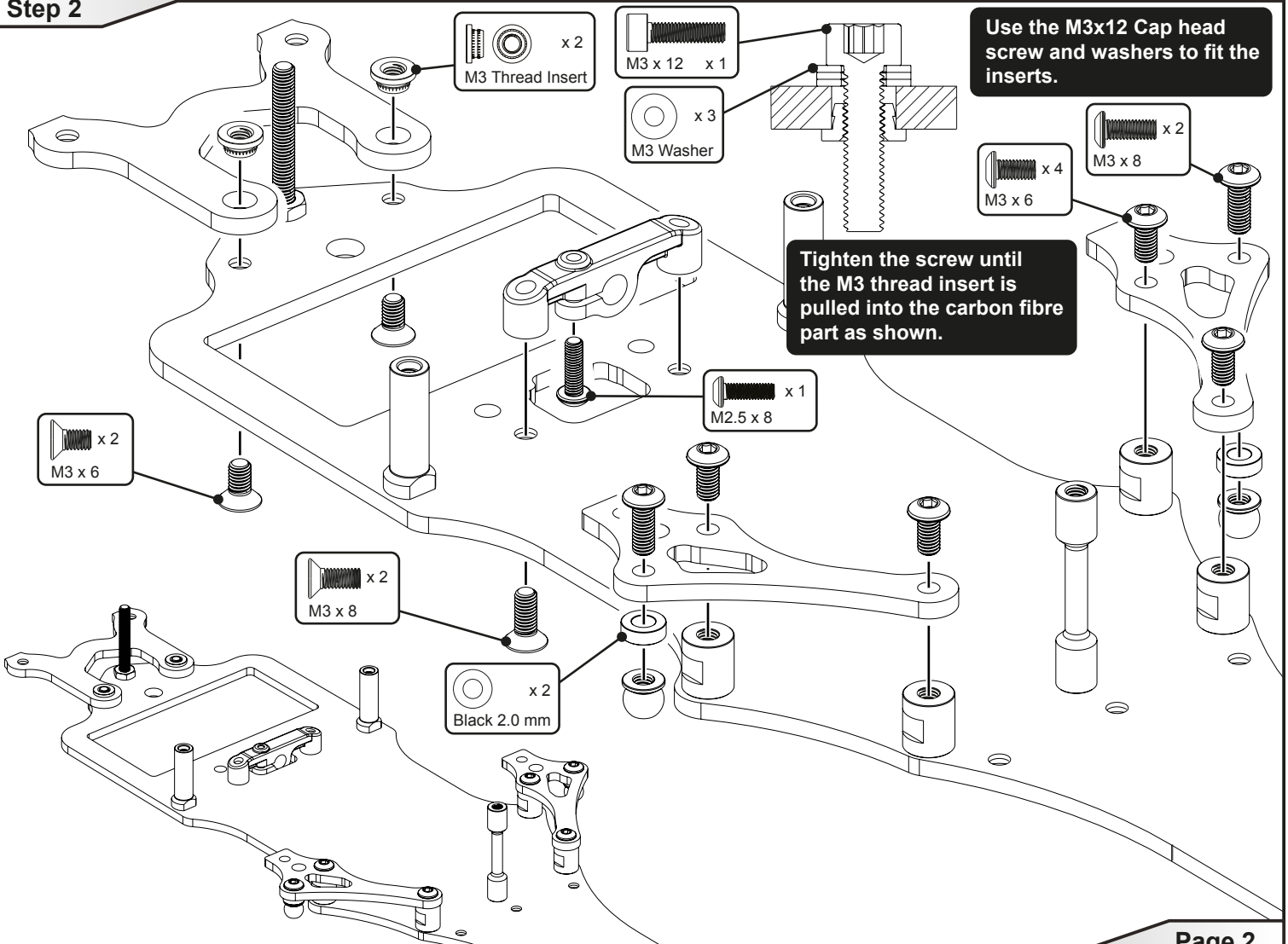
### IMPORTANT SAFETY NOTES

- We strongly recommend that anyone driving RC cars, or organising events, should obtain third party liability insurance. In the UK this can be done by joining the BRCA. [www.brca.org](http://www.brca.org)
- This product is not suitable for children under the age of 14, without the direct supervision of a responsible adult.
- Select an area for assembly that is away from the reach of small children.
- The parts in this kit are small and can be swallowed by children causing choking and possible internal injuries.
- Exercise care when using hand tools and sharp instruments during assembly.
- Carefully read all manufacturers warnings and cautions for any additional items used in the construction.
- In line with our policy of continuous development the exact details of the kit may vary.
- DO NOT use this car on public roads or in places where it can interfere with traffic, people or animals.
- Always check the operation of the radio with the wheels off the ground, before using the car.
- Make sure the radio and car batteries are fully charged before use.
- Disconnect and remove the battery from the car when not in use.
- Always store and charge LiPo batteries in a fireproof container.
- DO NOT put fingers or any objects inside rotating or moving parts as this may cause injury.
- Make sure the charger is correctly set for the type of battery you are using. Incorrect charging may cause a fire.
- Insulate all exposed electrical wiring. Exposed or damaged wires can cause short circuits and fire.
- The motor and speed controller can become hot during use. DO NOT touch them immediately after using your car as this may cause injury.

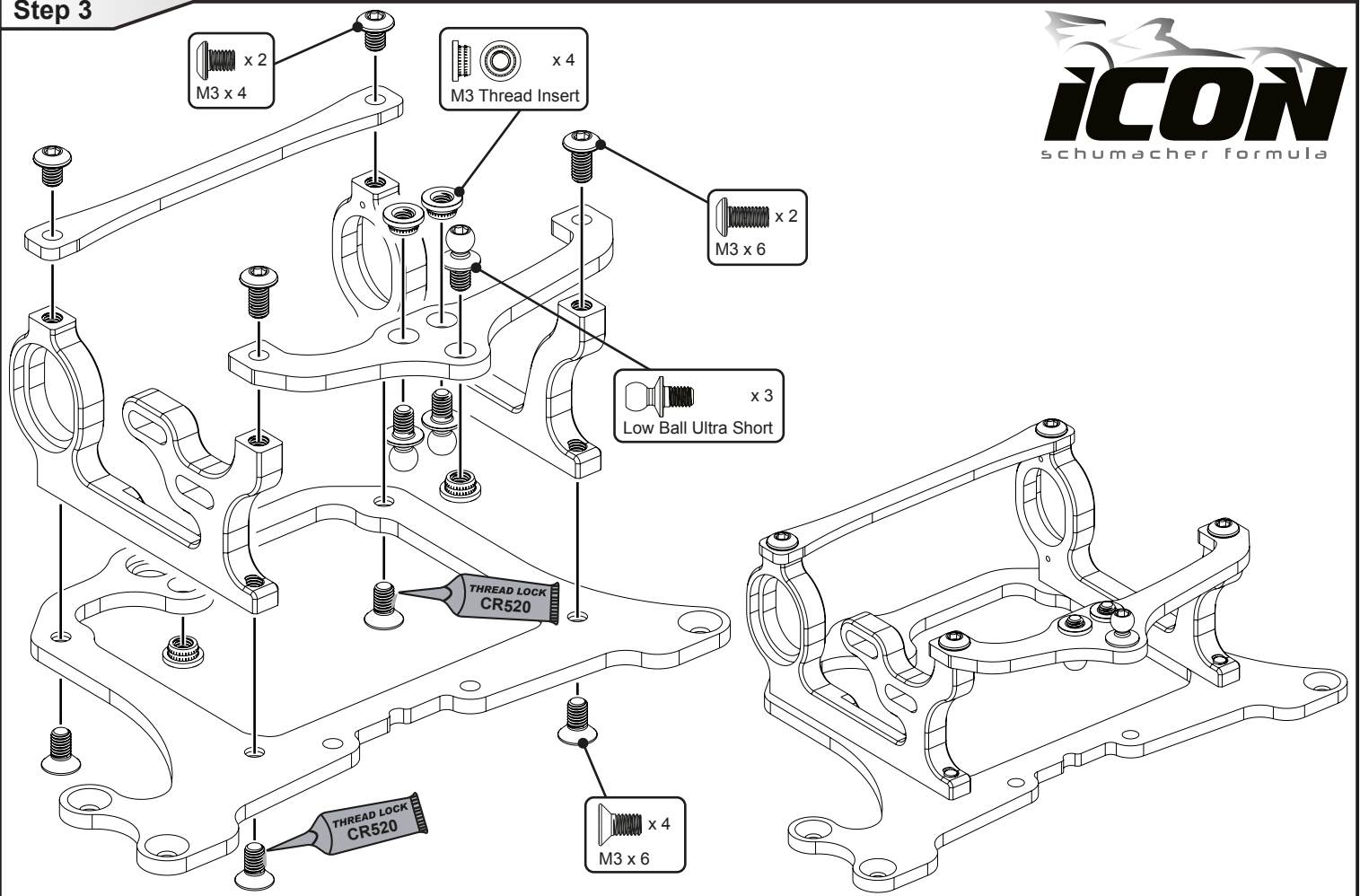
# Step 1



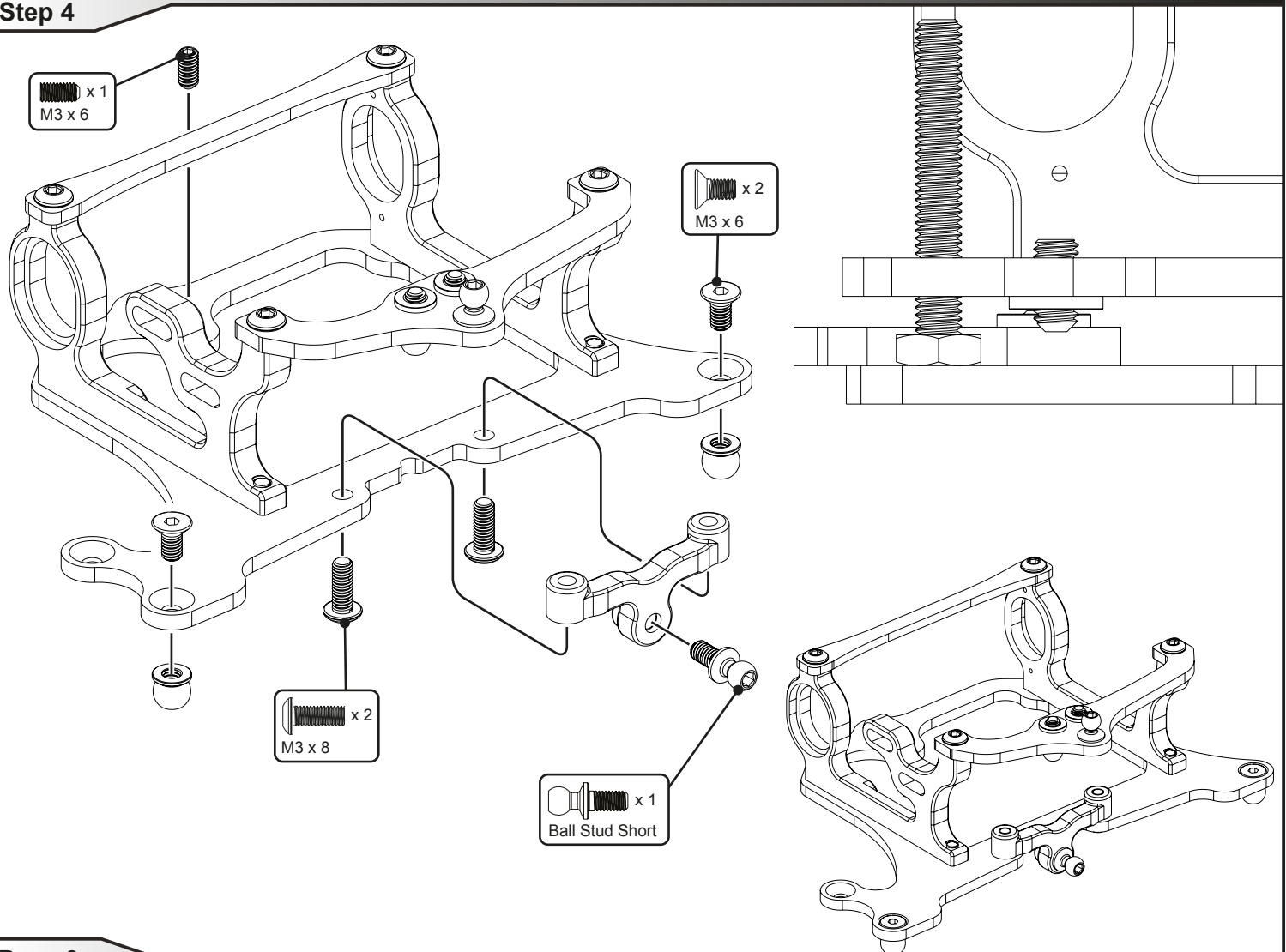
# Step 2



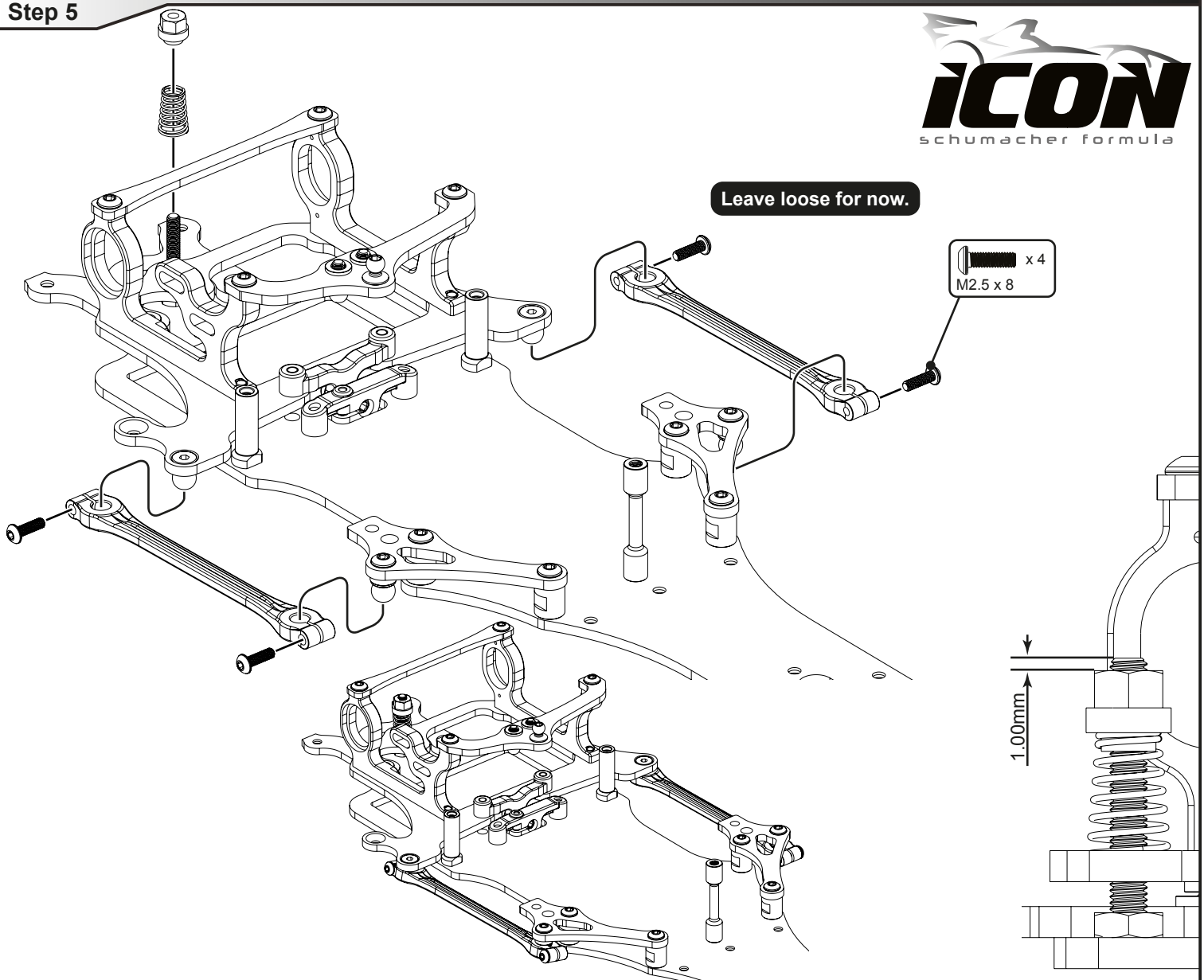
### Step 3



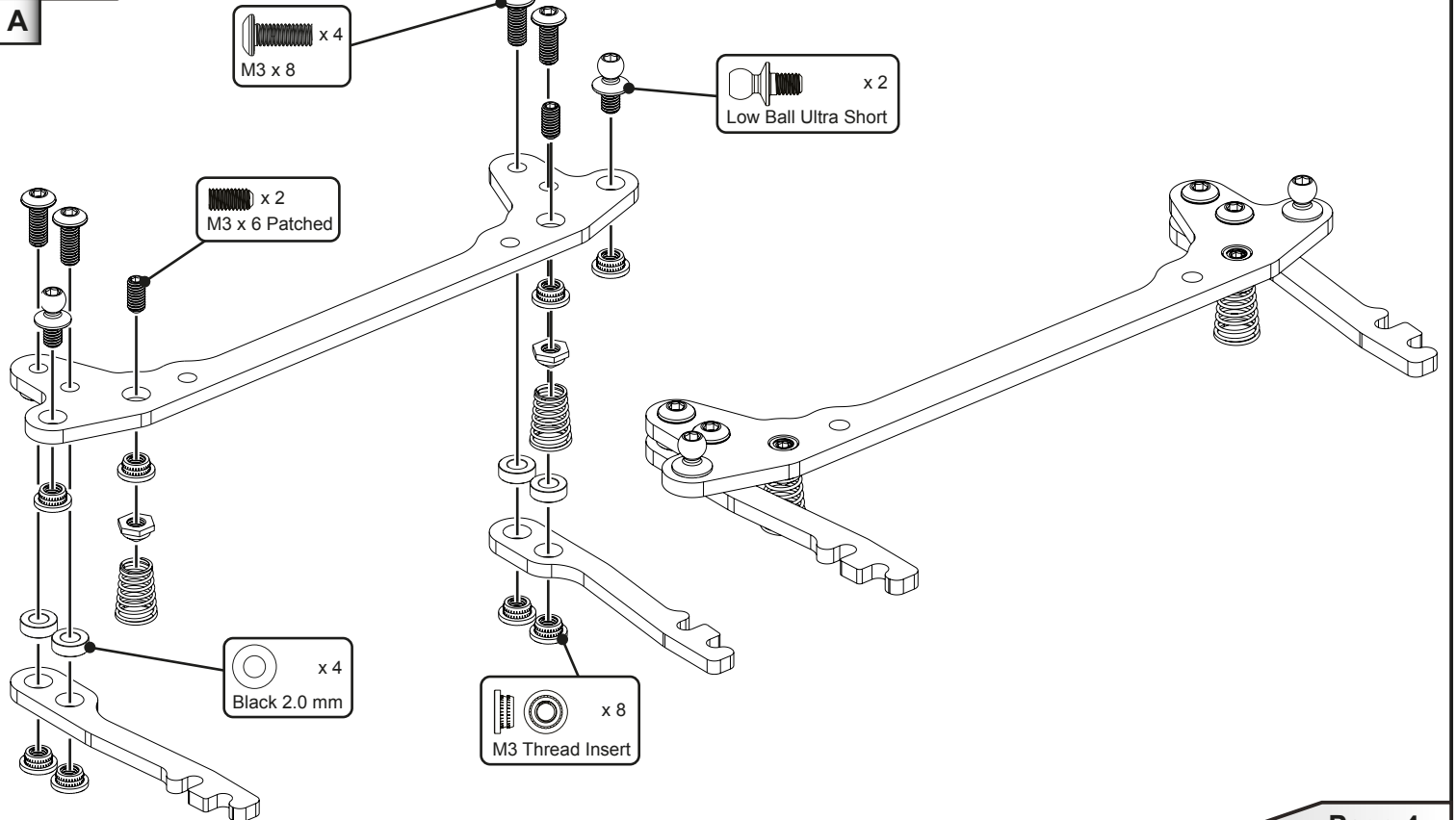
### Step 4



Step 5

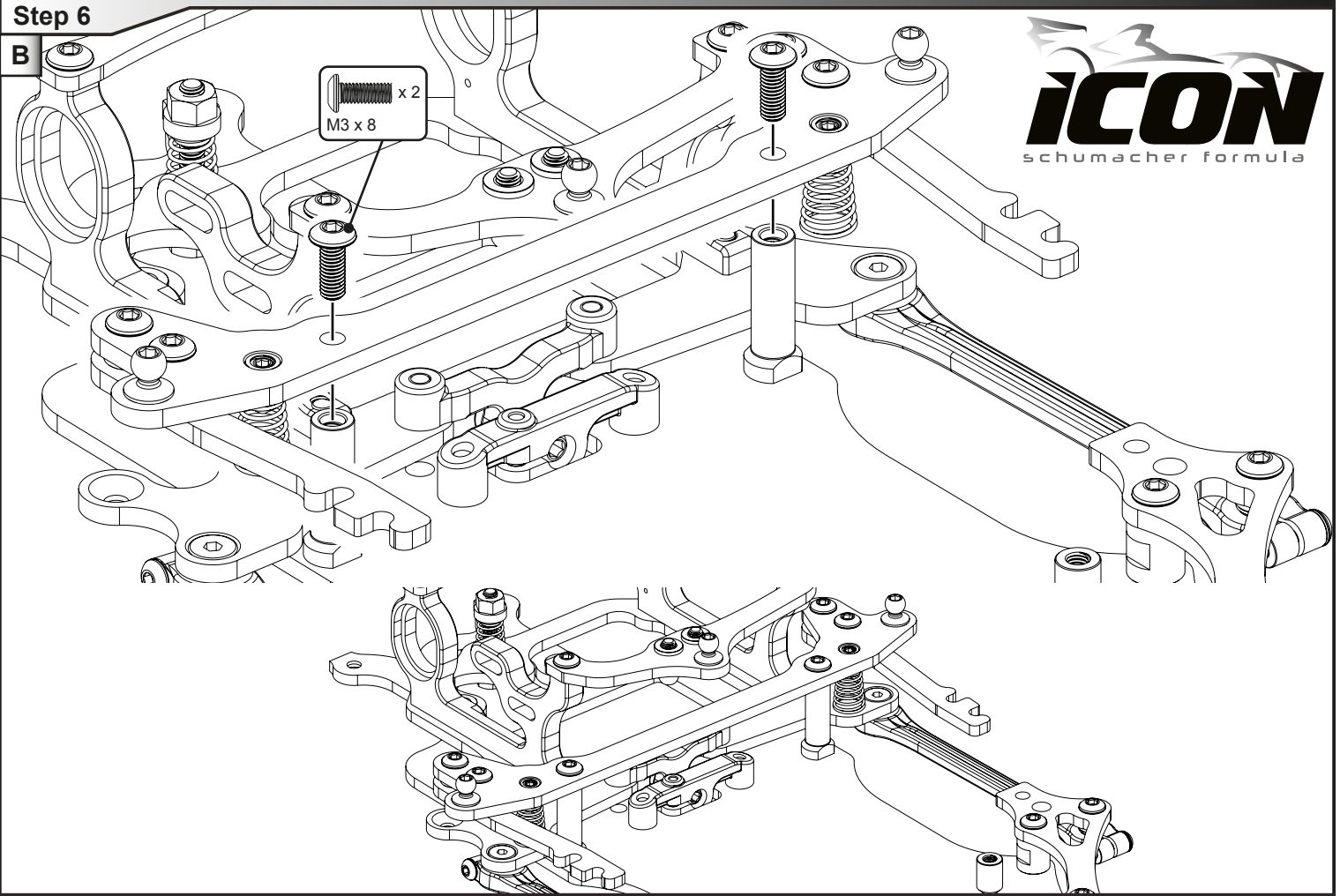


Step 6



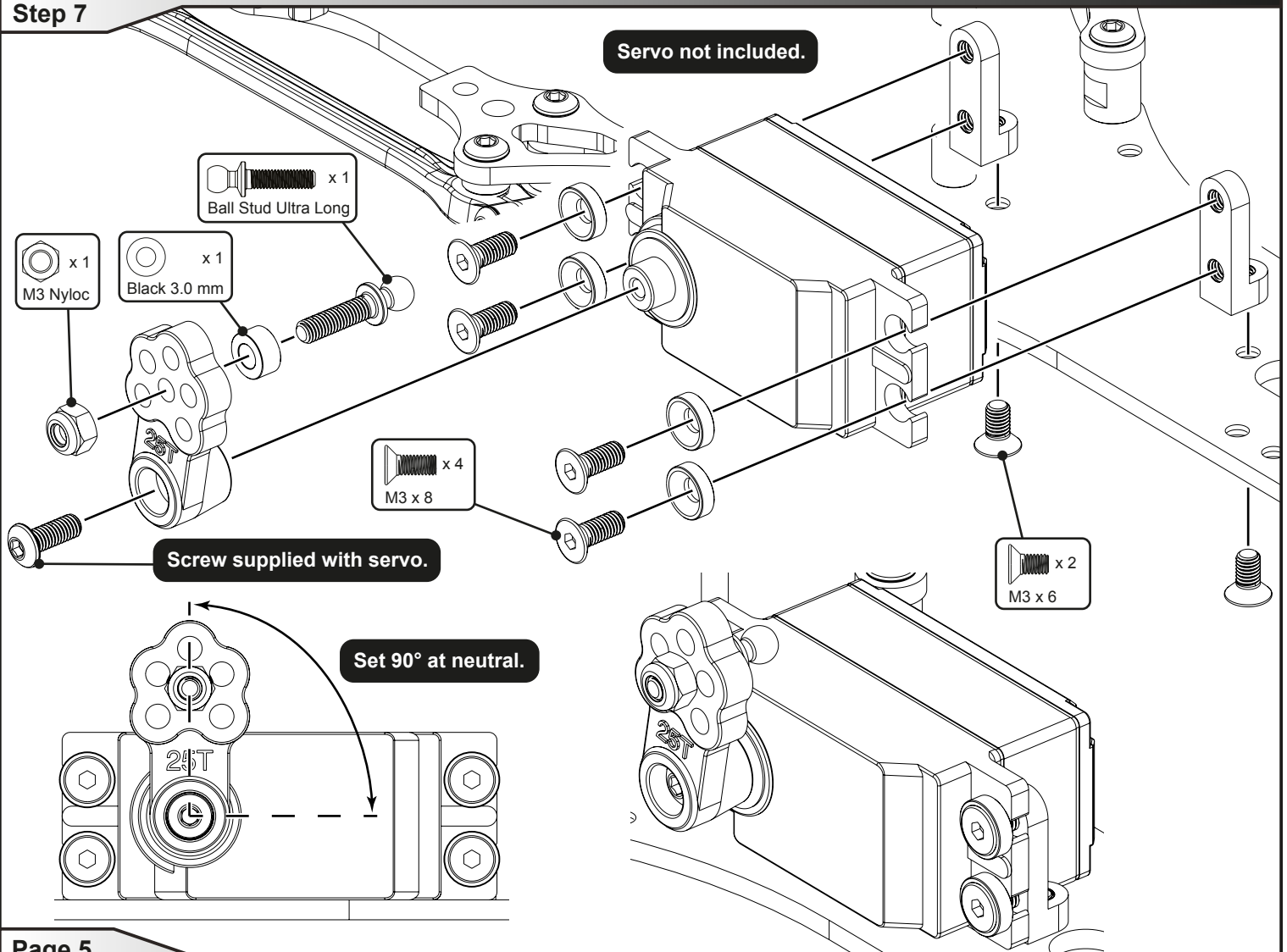
Step 6

B



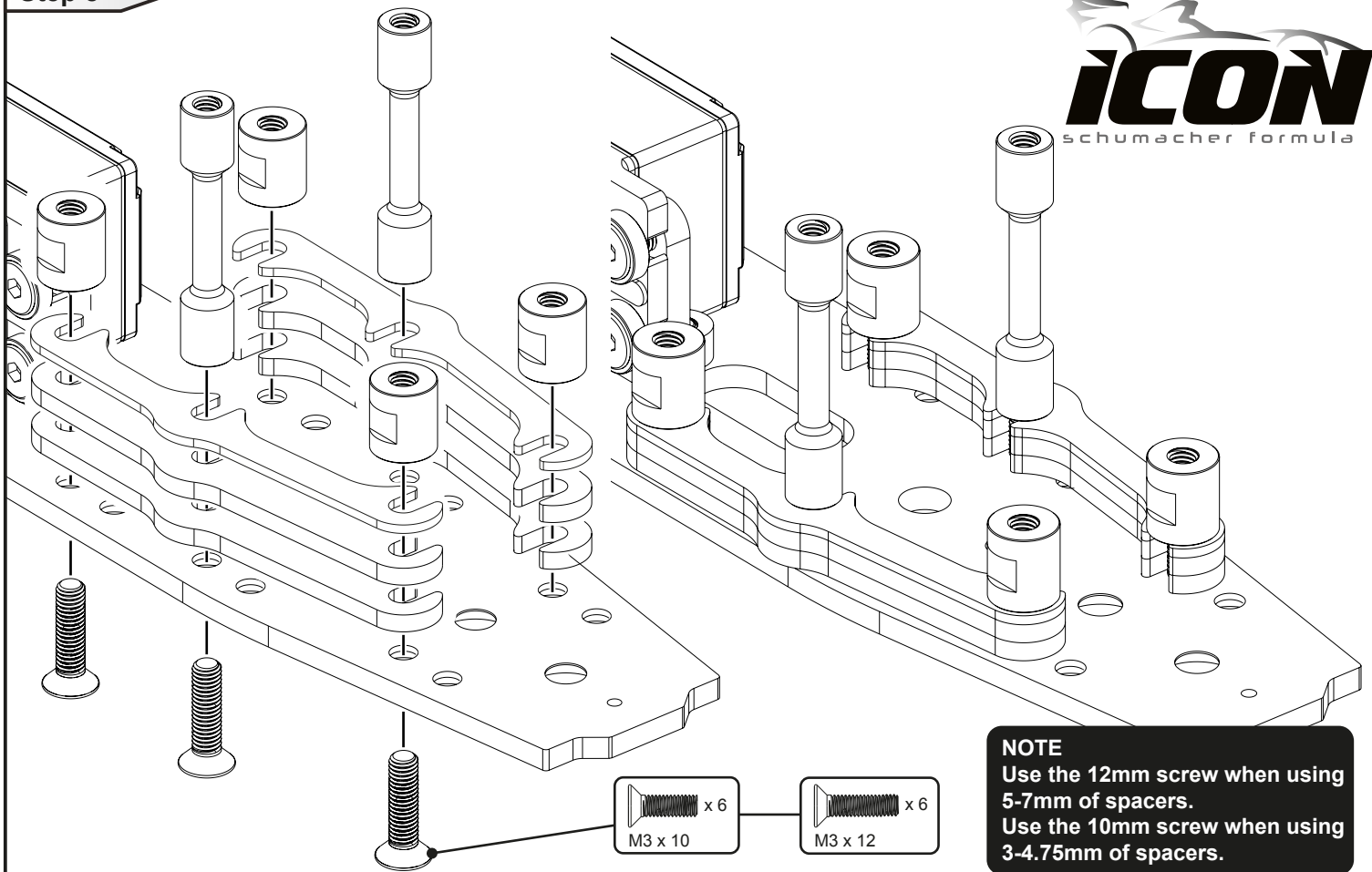
Step 7

Servo not included.



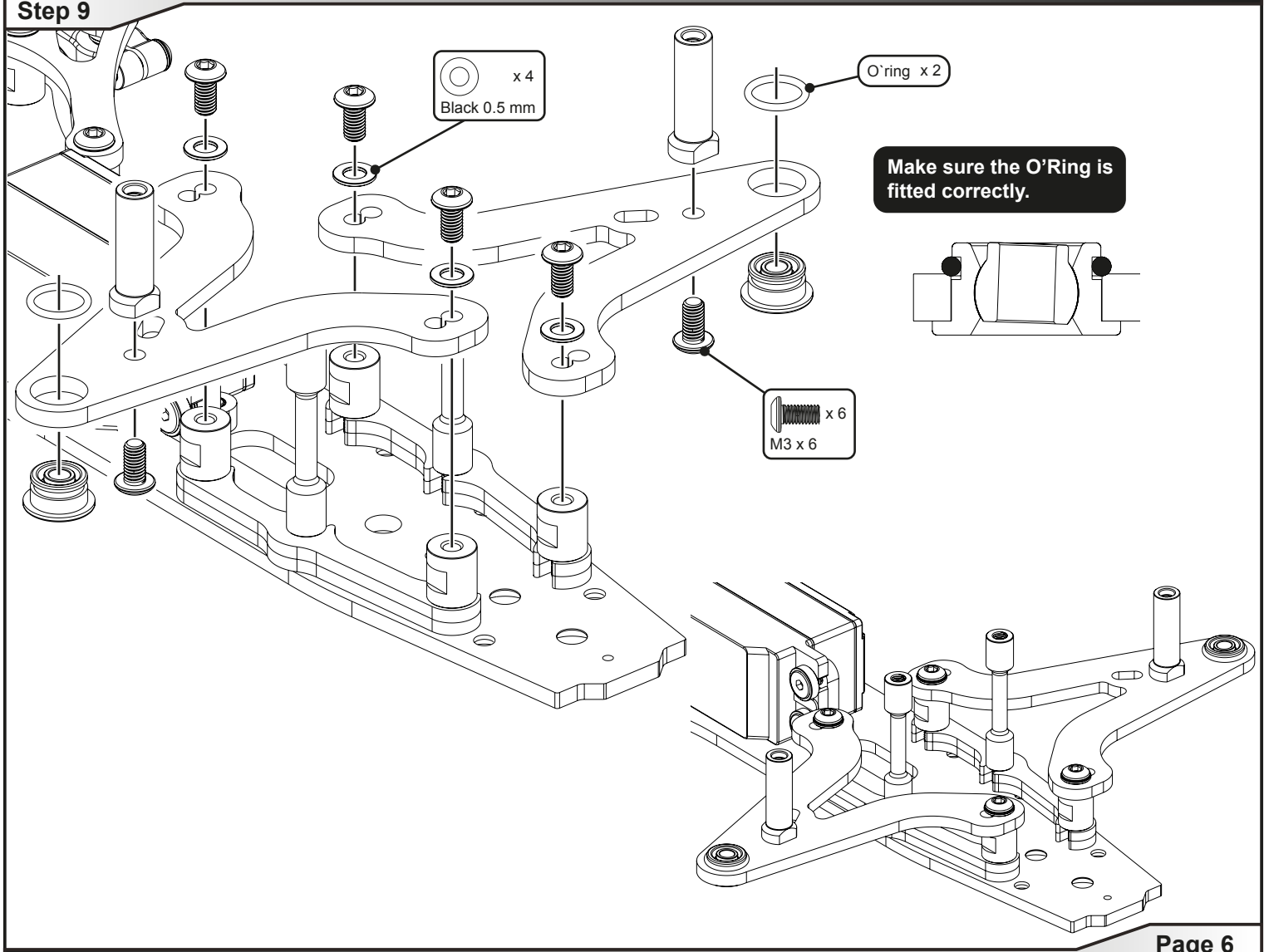
Set 90° at neutral.

Step 8

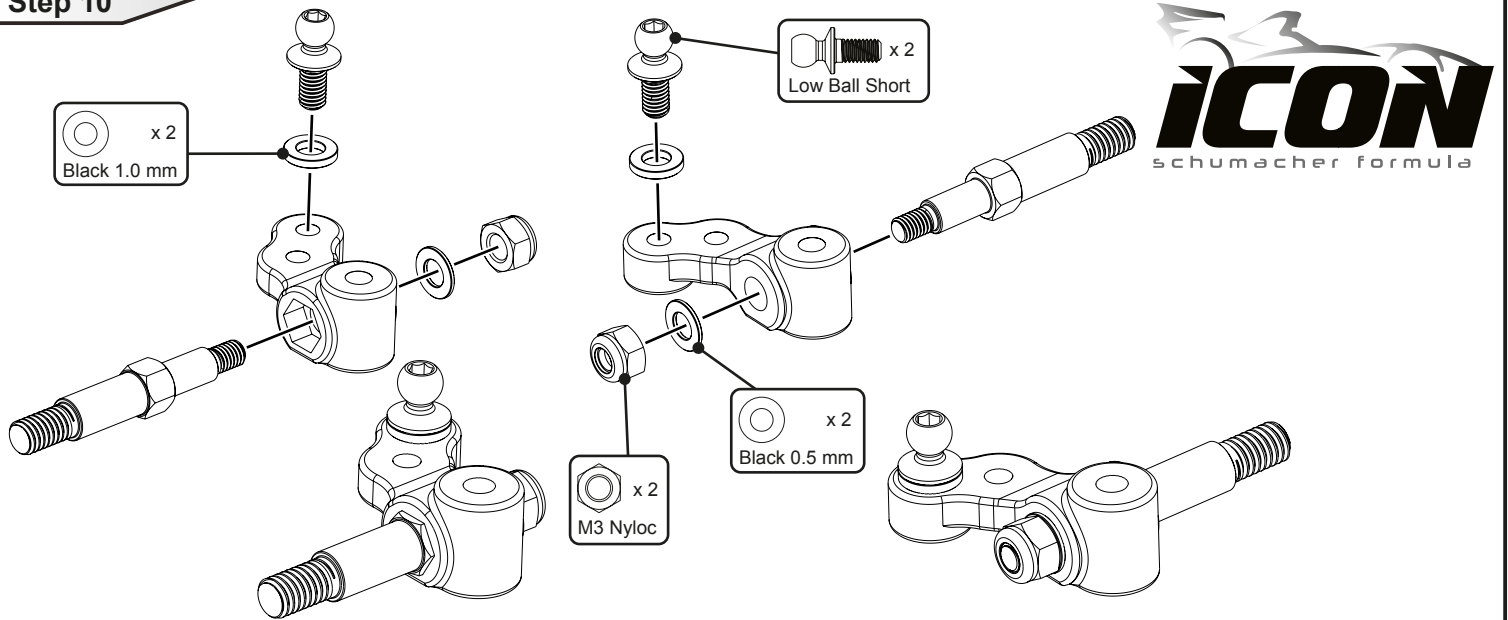


**NOTE**  
Use the 12mm screw when using 5-7mm of spacers.  
Use the 10mm screw when using 3-4.75mm of spacers.

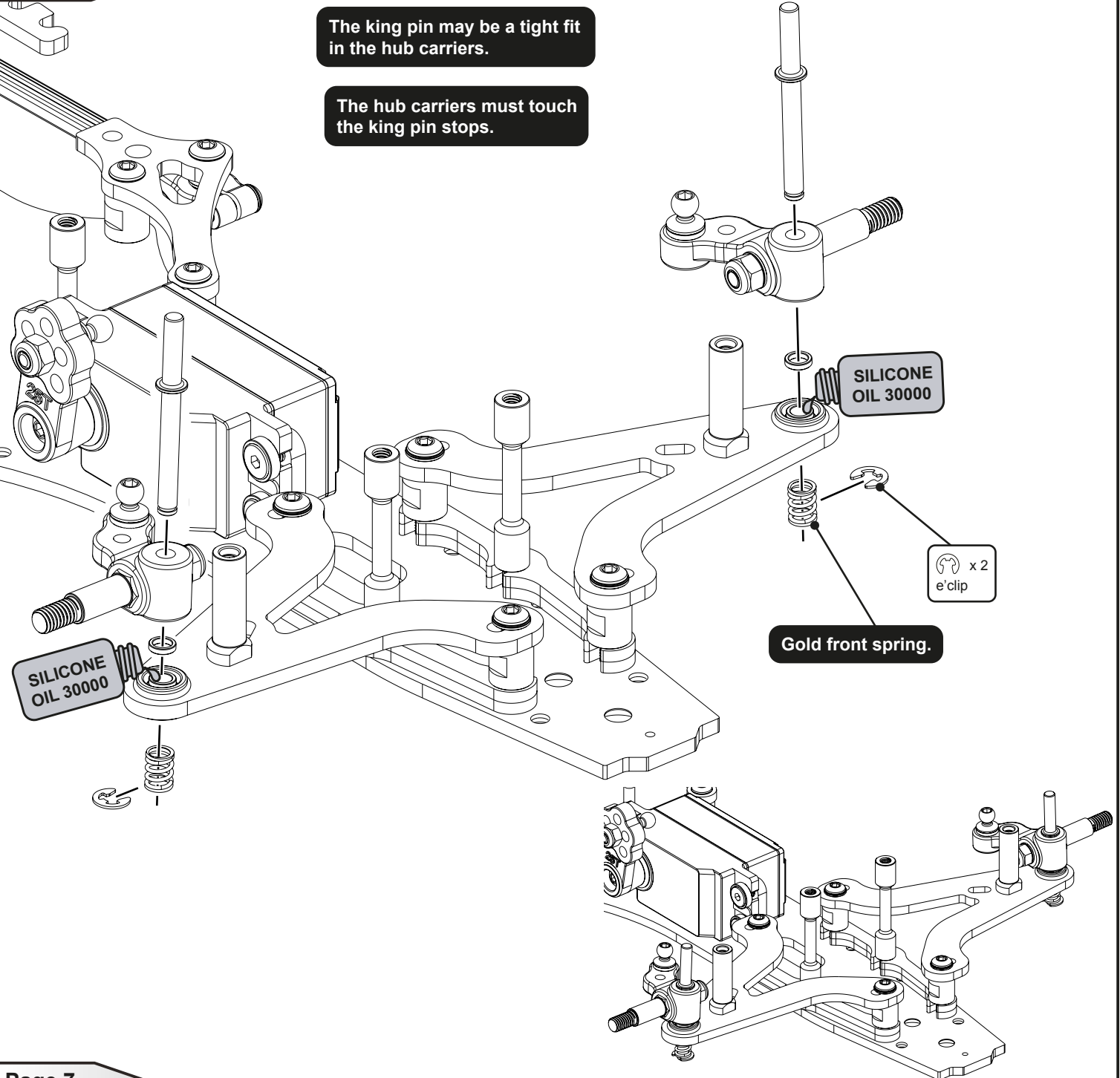
Step 9



# Step 10

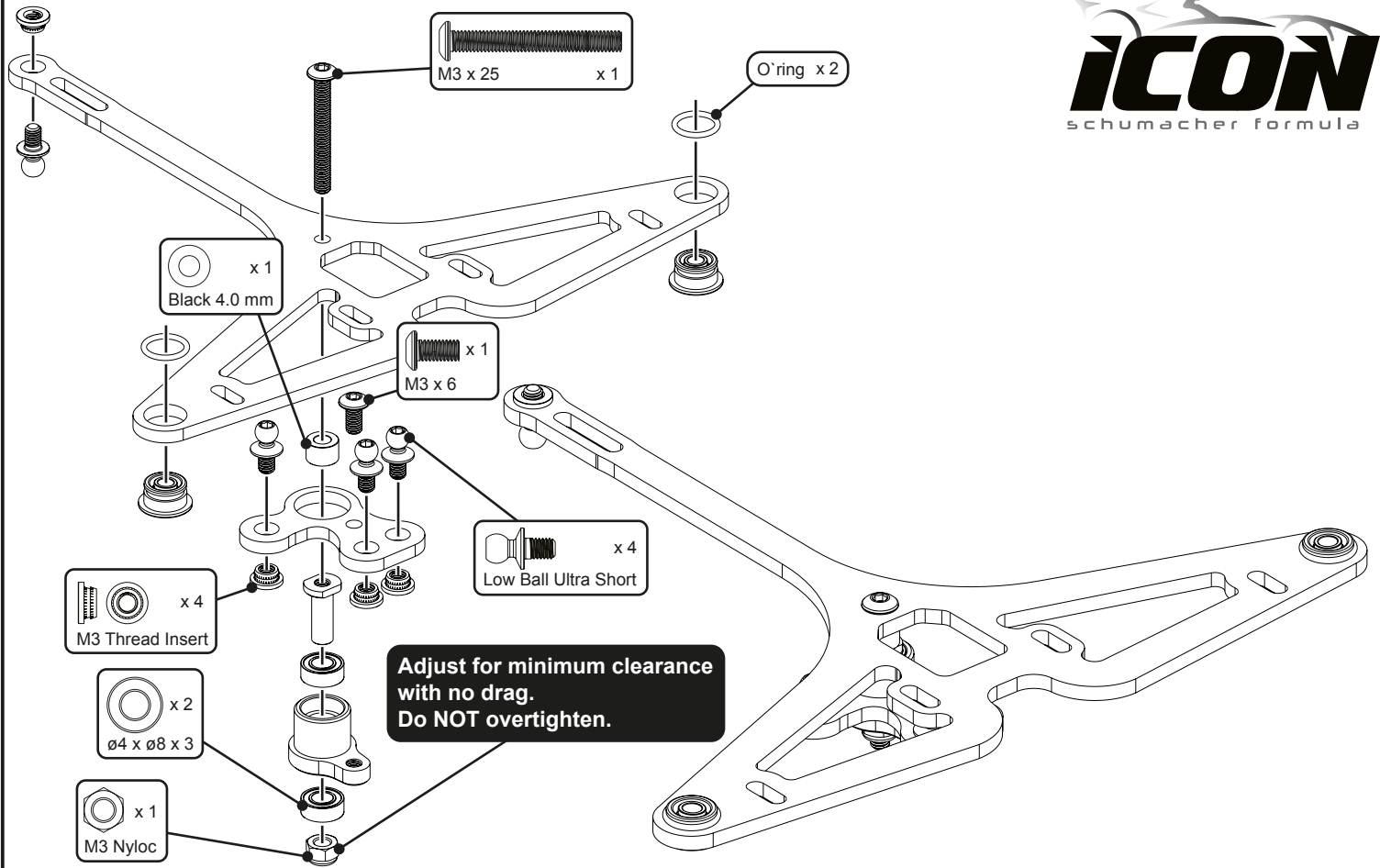


# Step 11

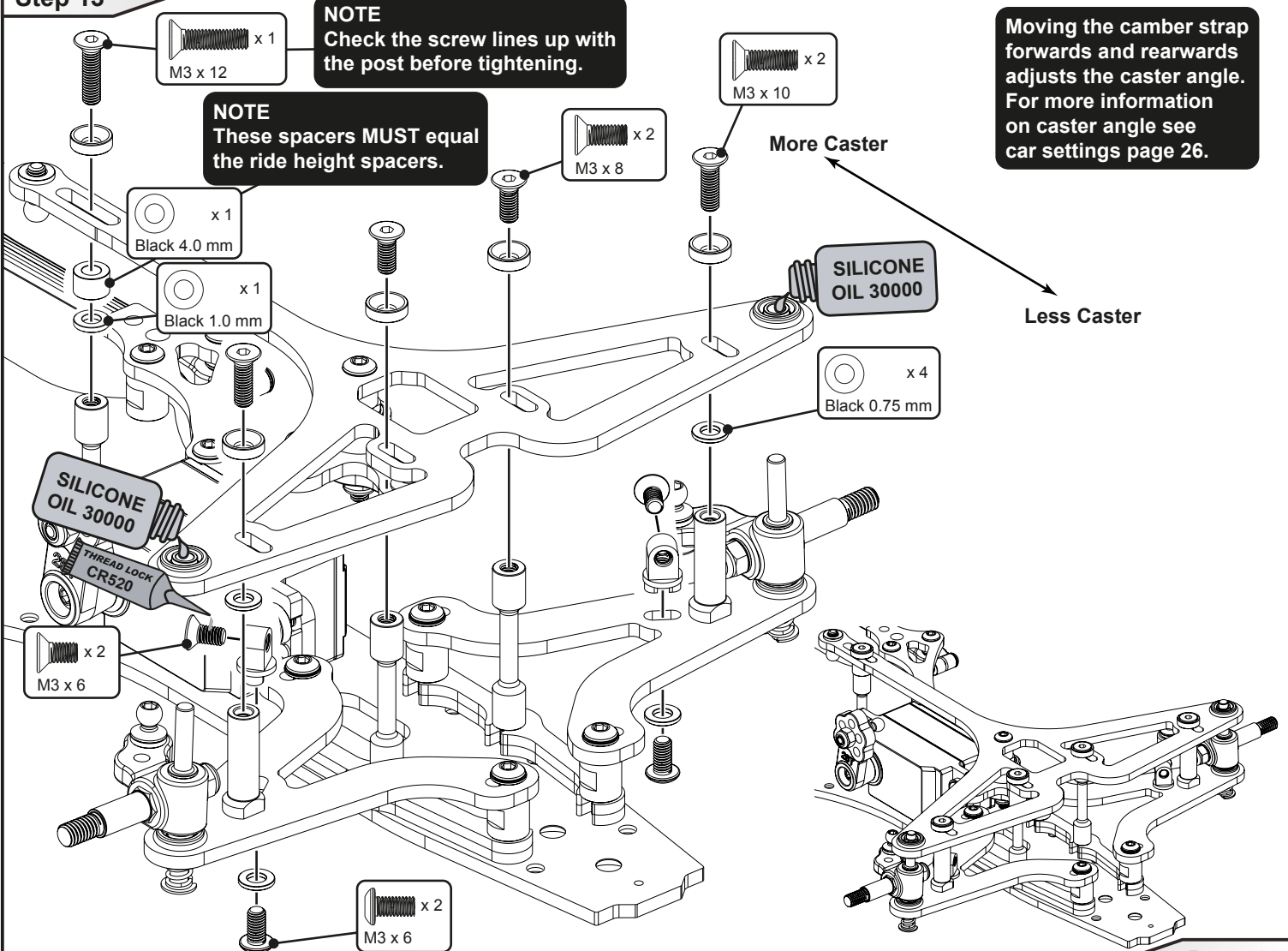




# Step 12



# Step 13



Step 14

A

Note the shape of the turnbuckle. This side is the left hand thread.



RH Thread

LH Thread

LH Thread

Shorter Link

RH Thread

Longer Link

Steering Link

17.00mm

Left Hand Trackrod

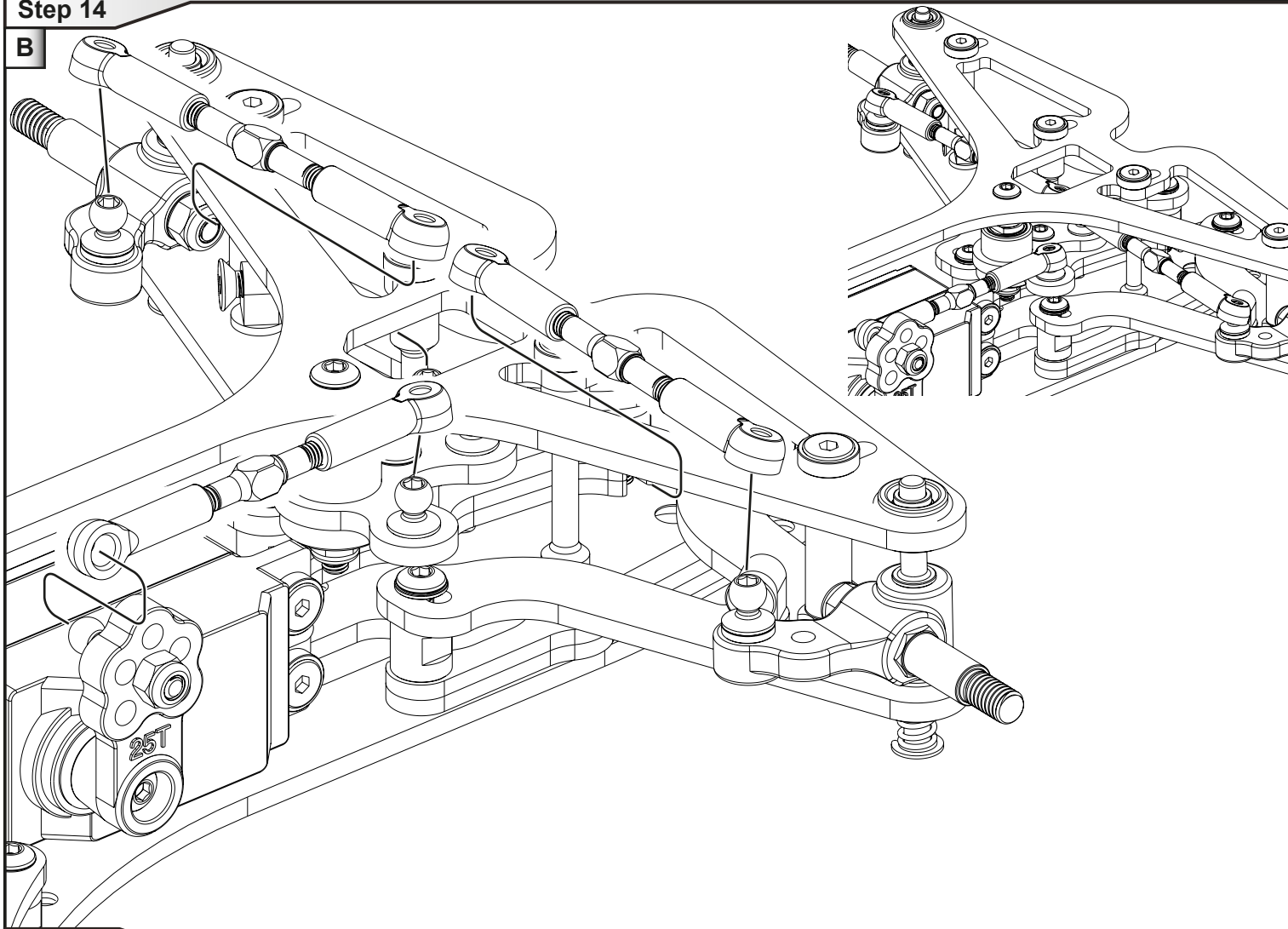
21.00mm

Right Hand Trackrod

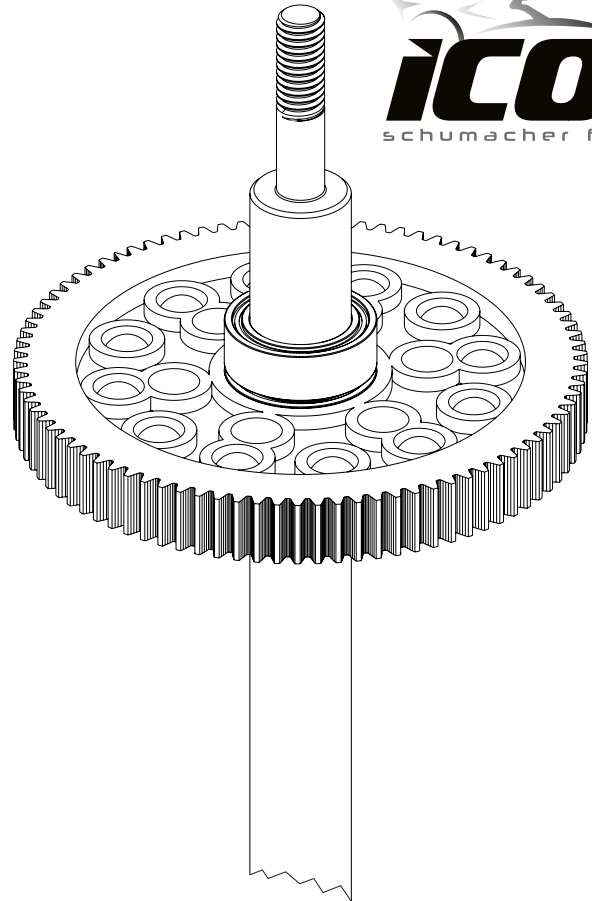
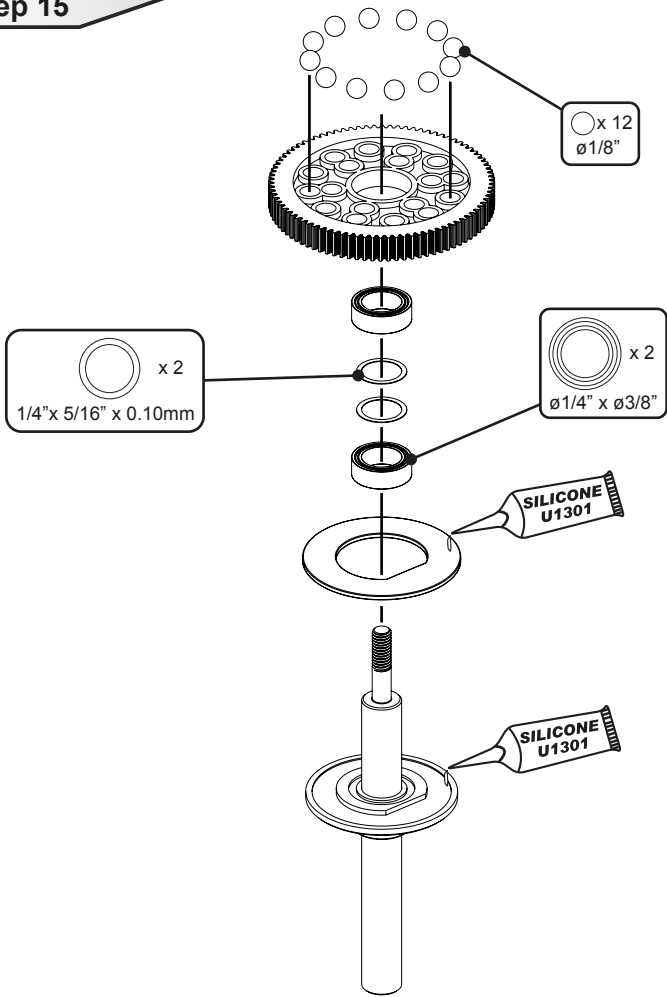
Screwing the sockets onto the turnbuckle, until no threads are visible, and then undoing them to the desired length allows for easier adjustment on the car. Greasing the threads will also help.

Step 14

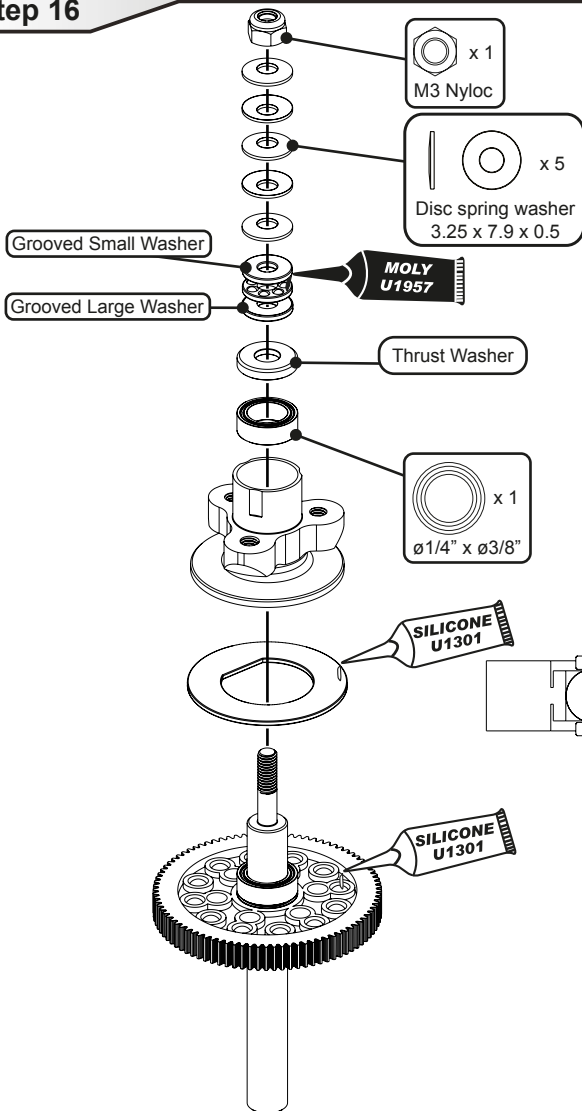
B



Step 15



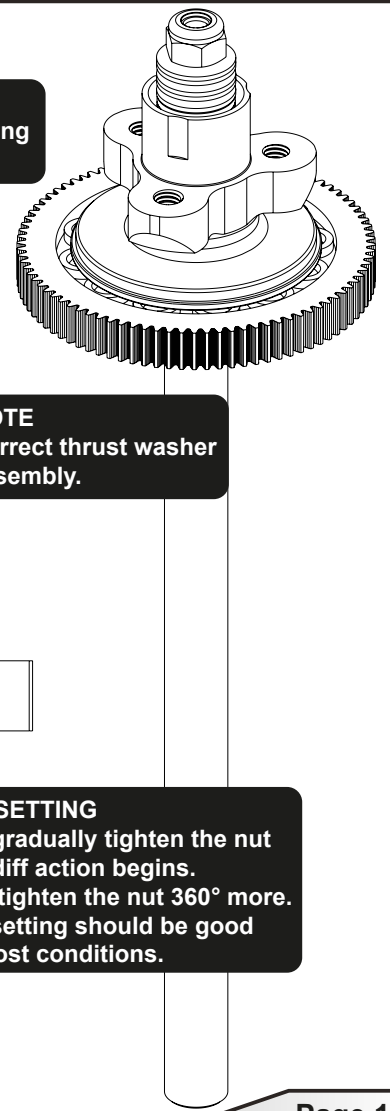
Step 16



**NOTE**  
Correct disk spring  
assembly.

**NOTE**  
Correct thrust washer  
assembly.

**DIFF SETTING**  
Very gradually tighten the nut  
until diff action begins.  
Then tighten the nut 360° more.  
This setting should be good  
for most conditions.



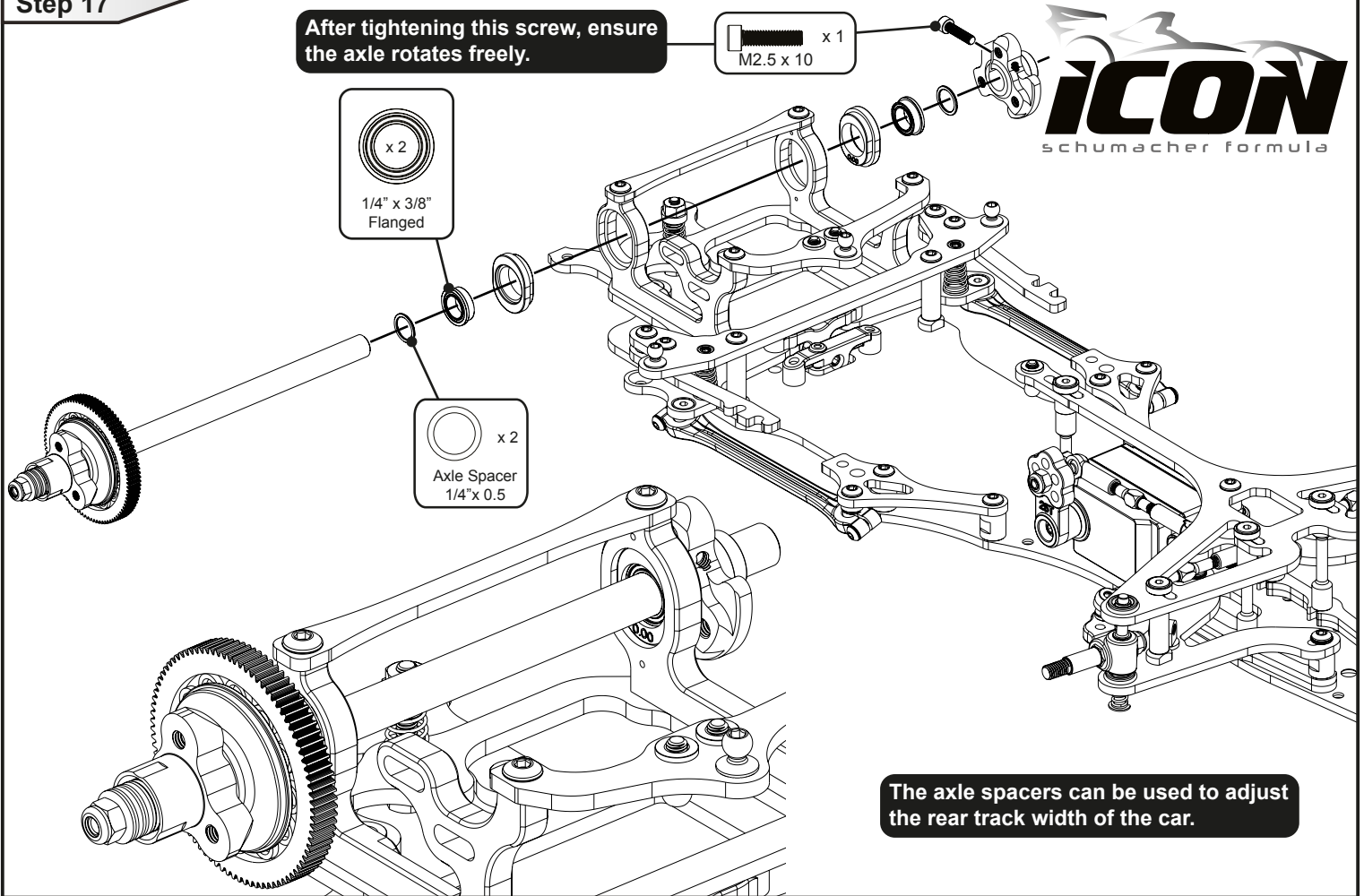
Step 17

After tightening this screw, ensure the axle rotates freely.

M2.5 x 10 x 1

x 2  
1/4" x 3/8"  
Flanged

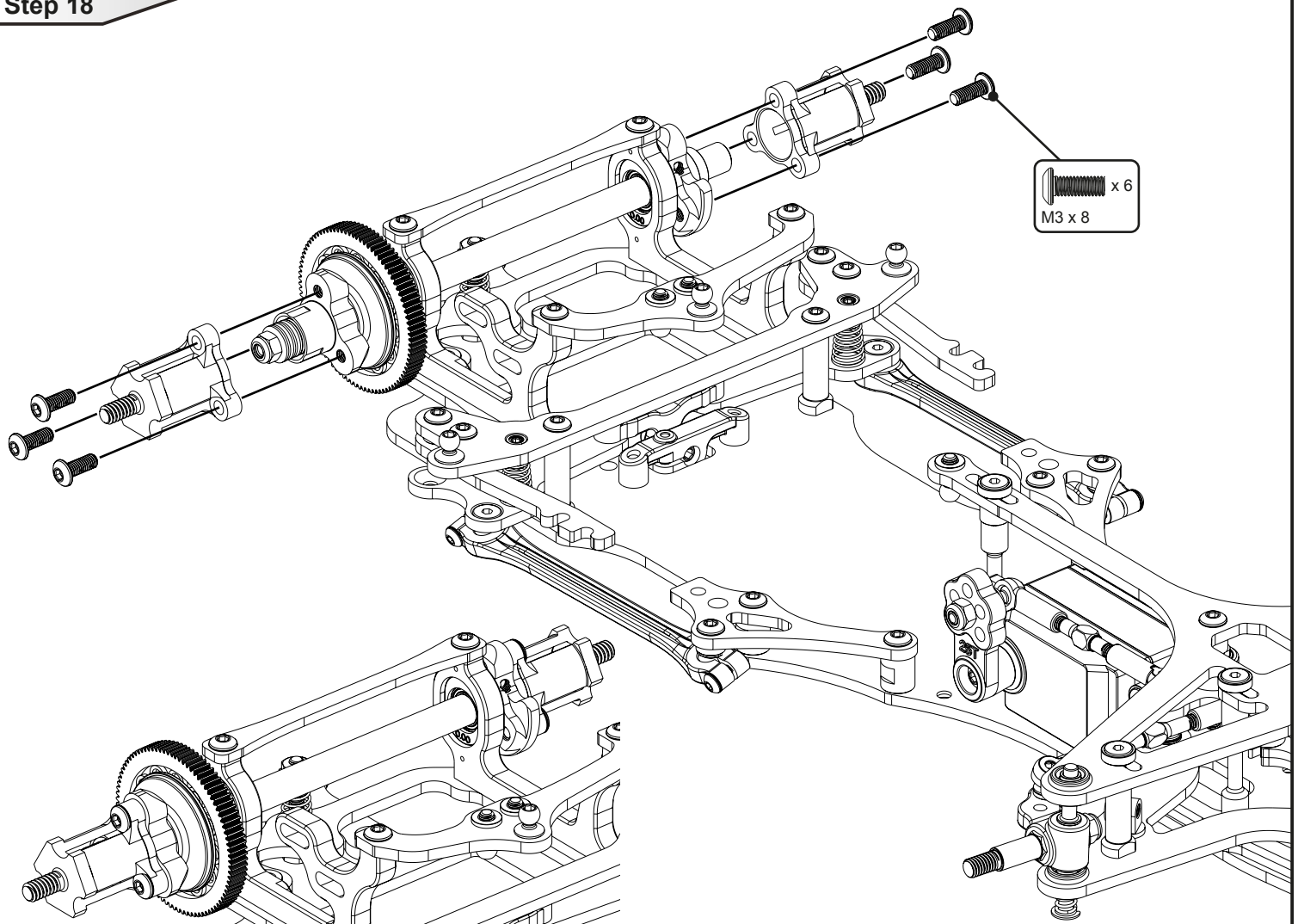
x 2  
Axle Spacer  
1/4" x 0.5



The axle spacers can be used to adjust the rear track width of the car.

Step 18

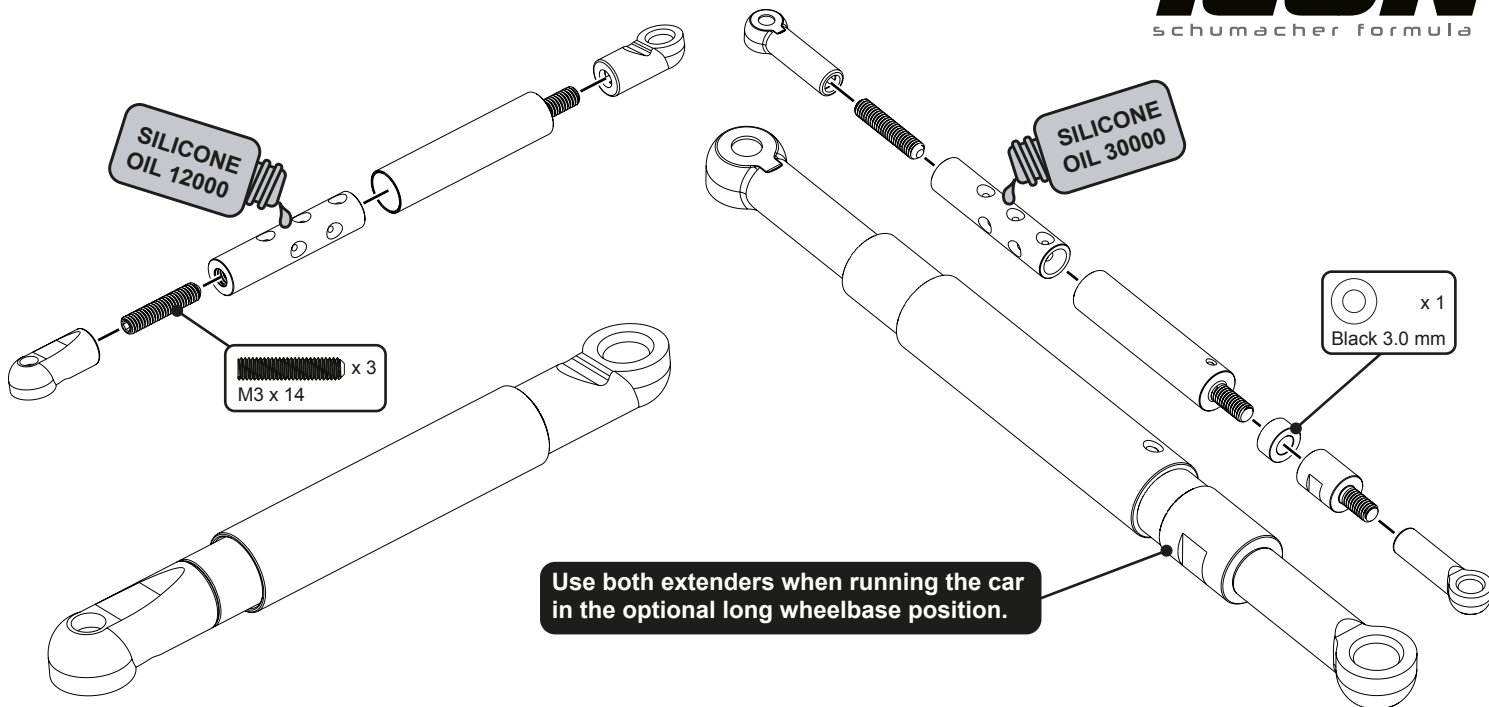
x 6  
M3 x 8



Step 19

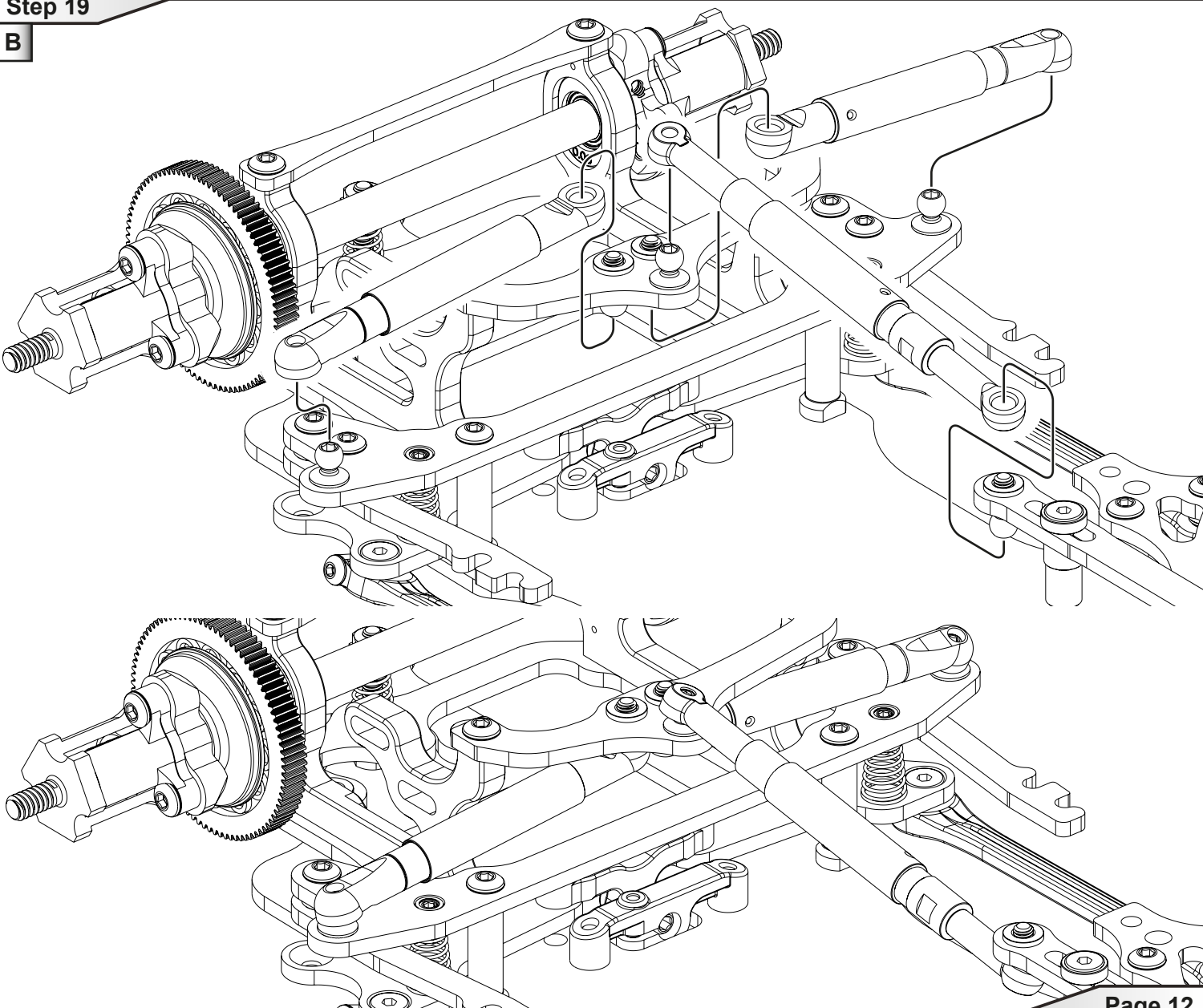
A

Make two side dampers the same.

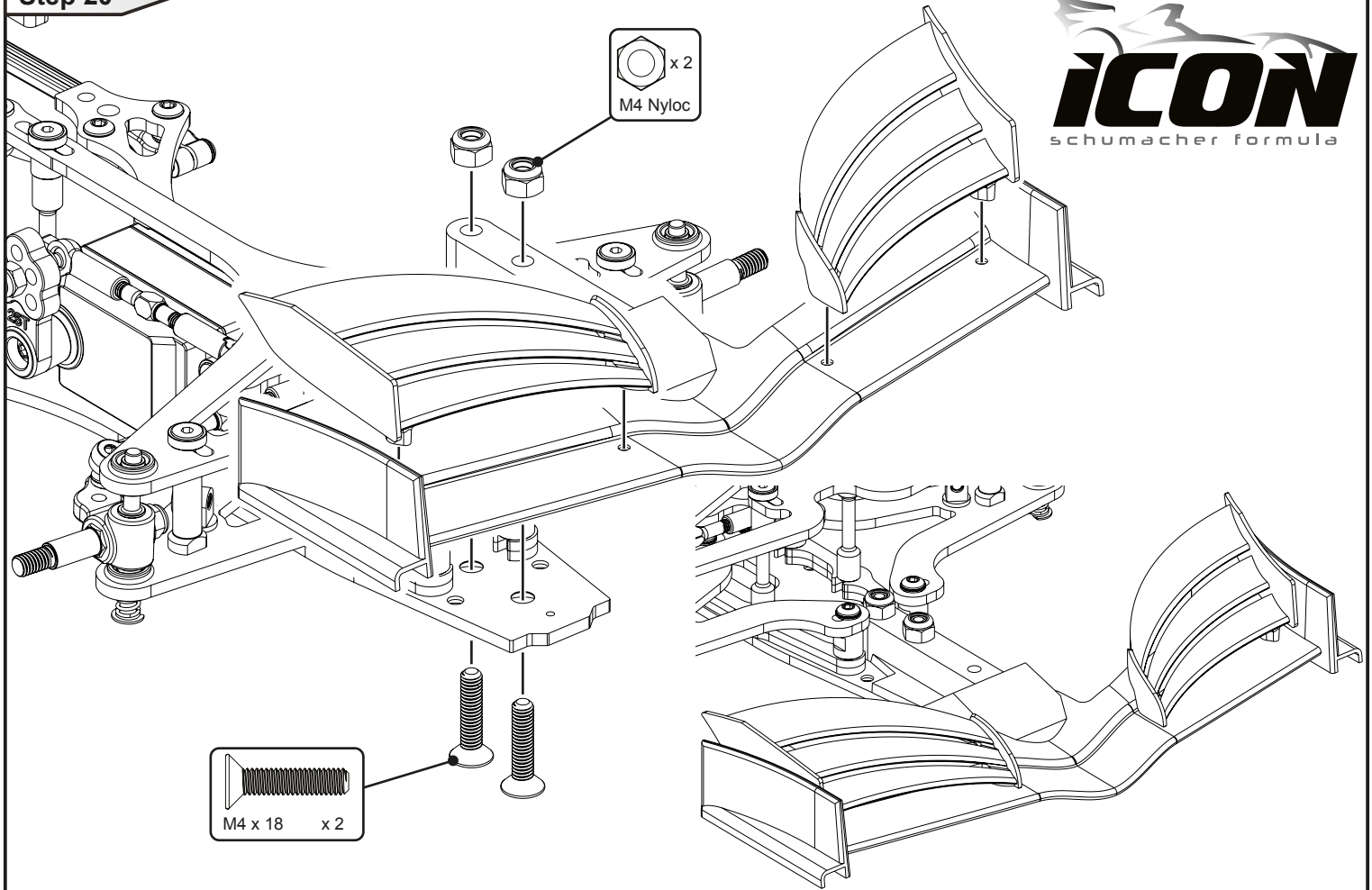


Step 19

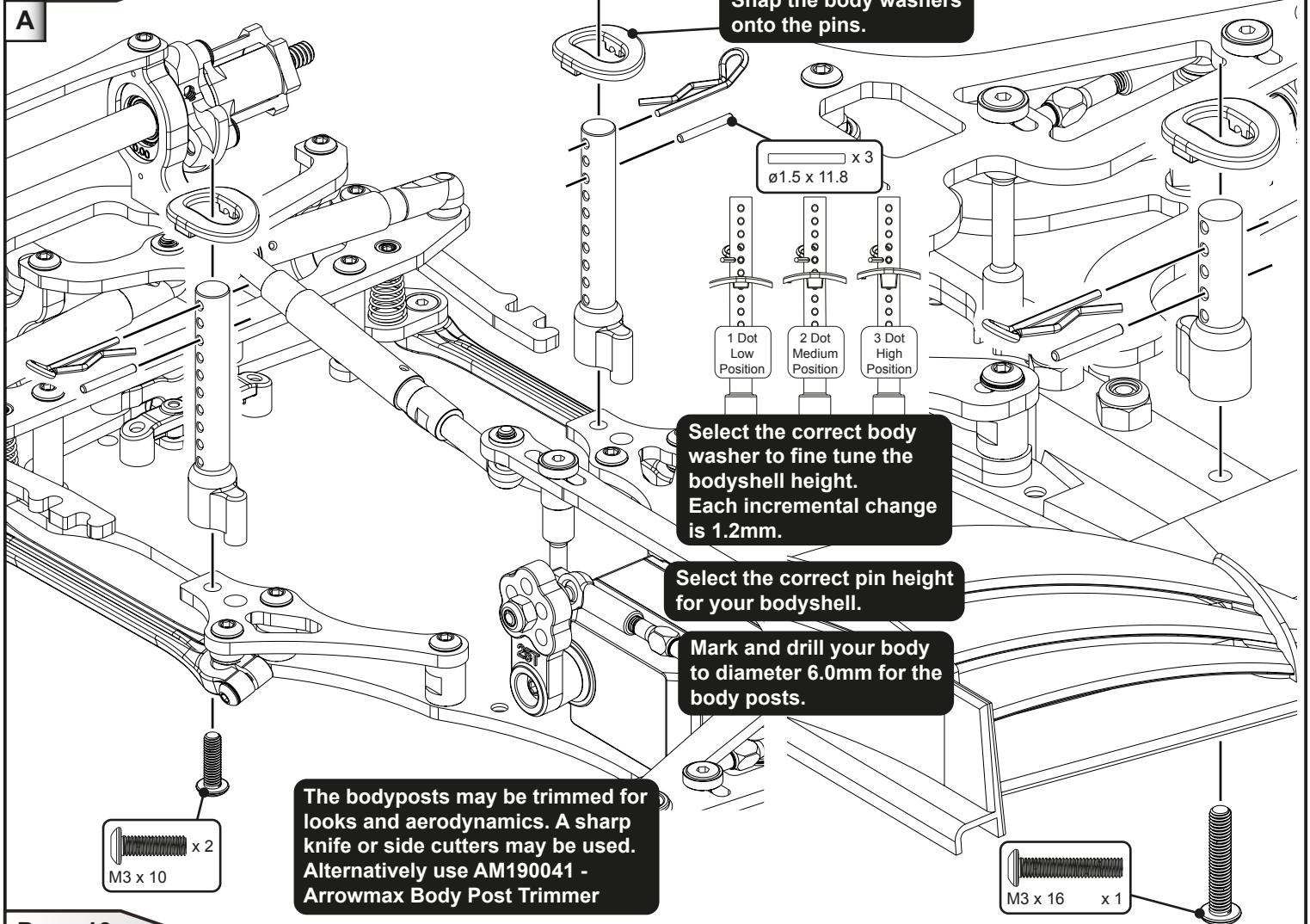
B



Step 20

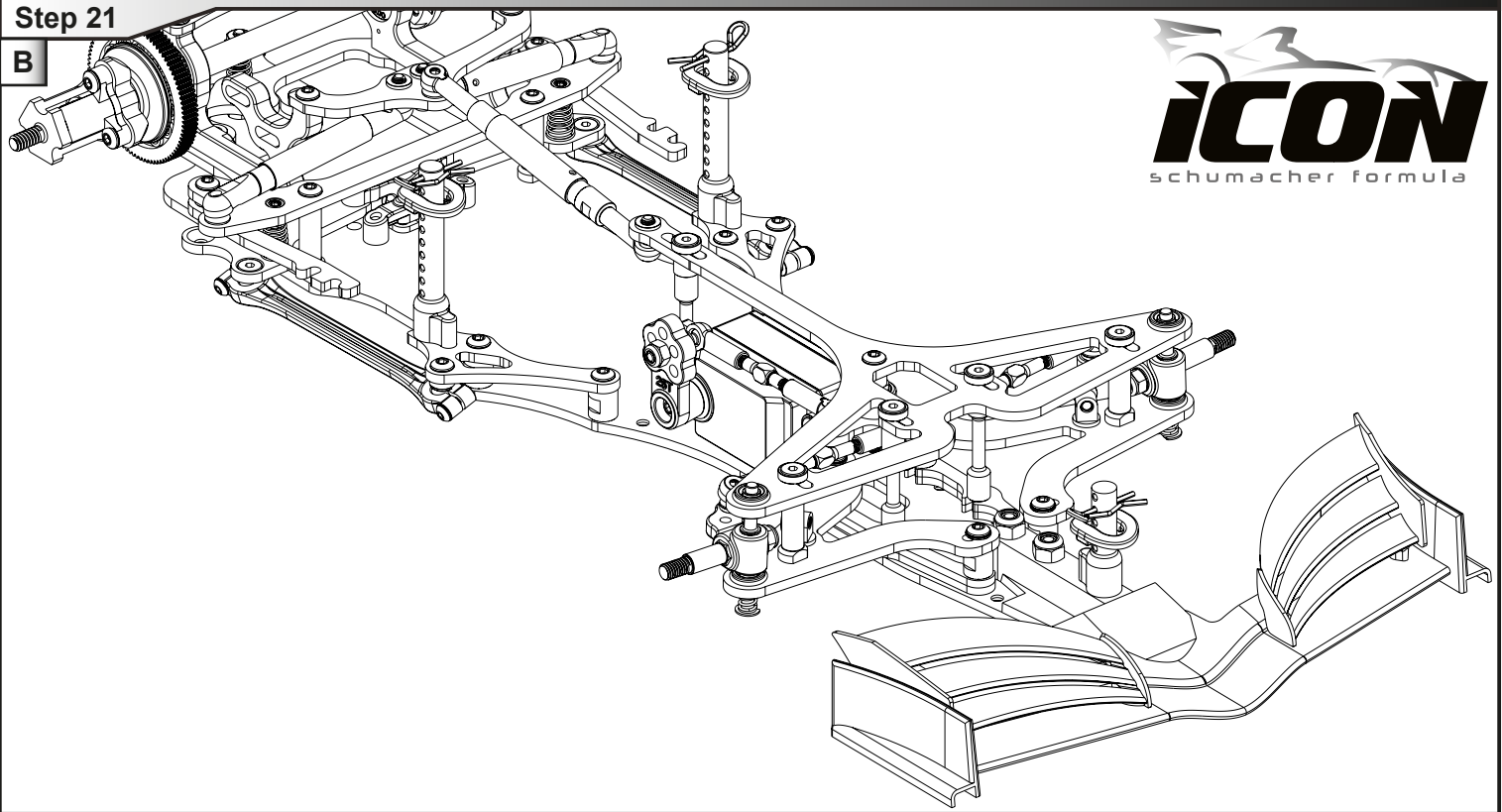


Step 21



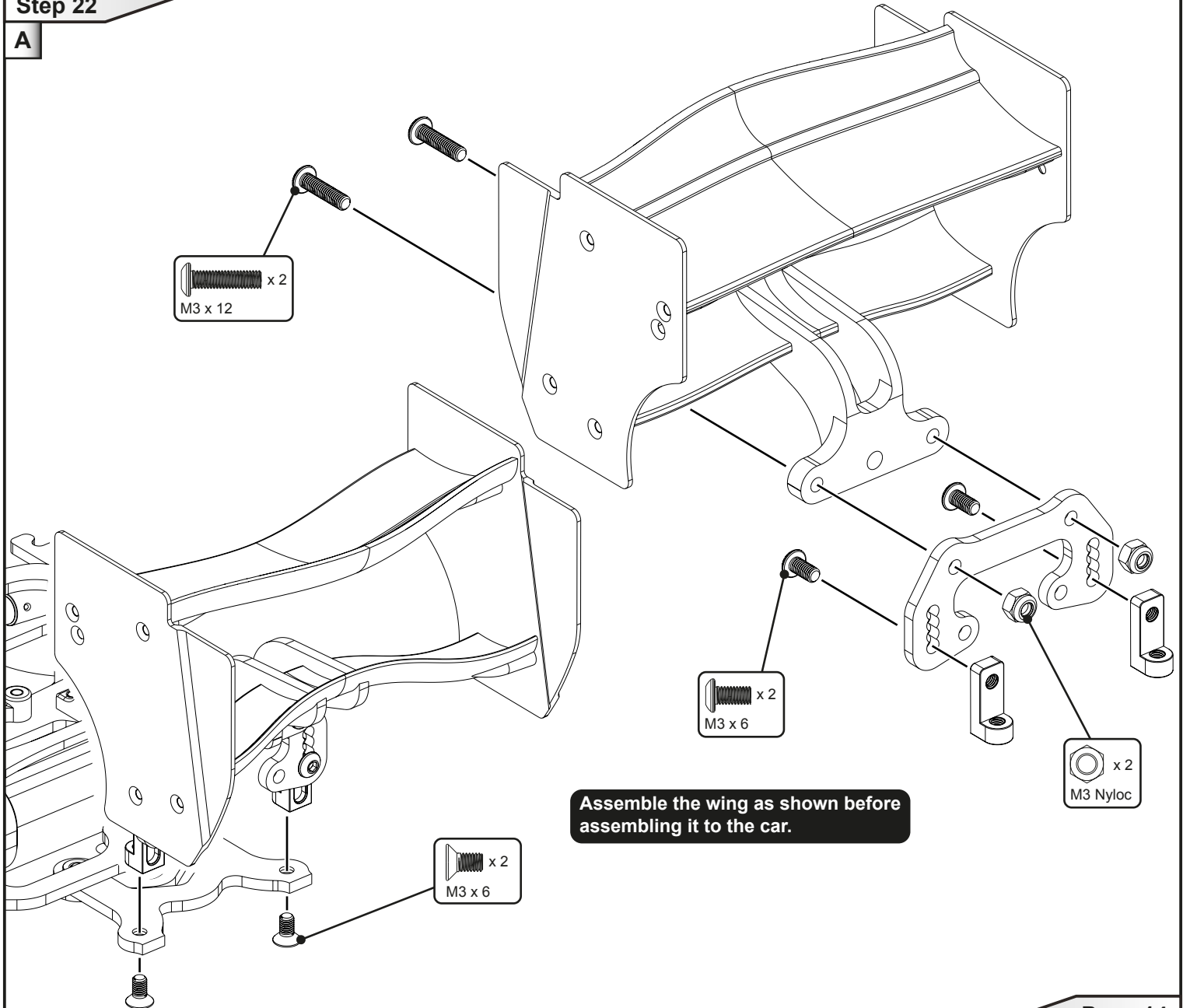
Step 21

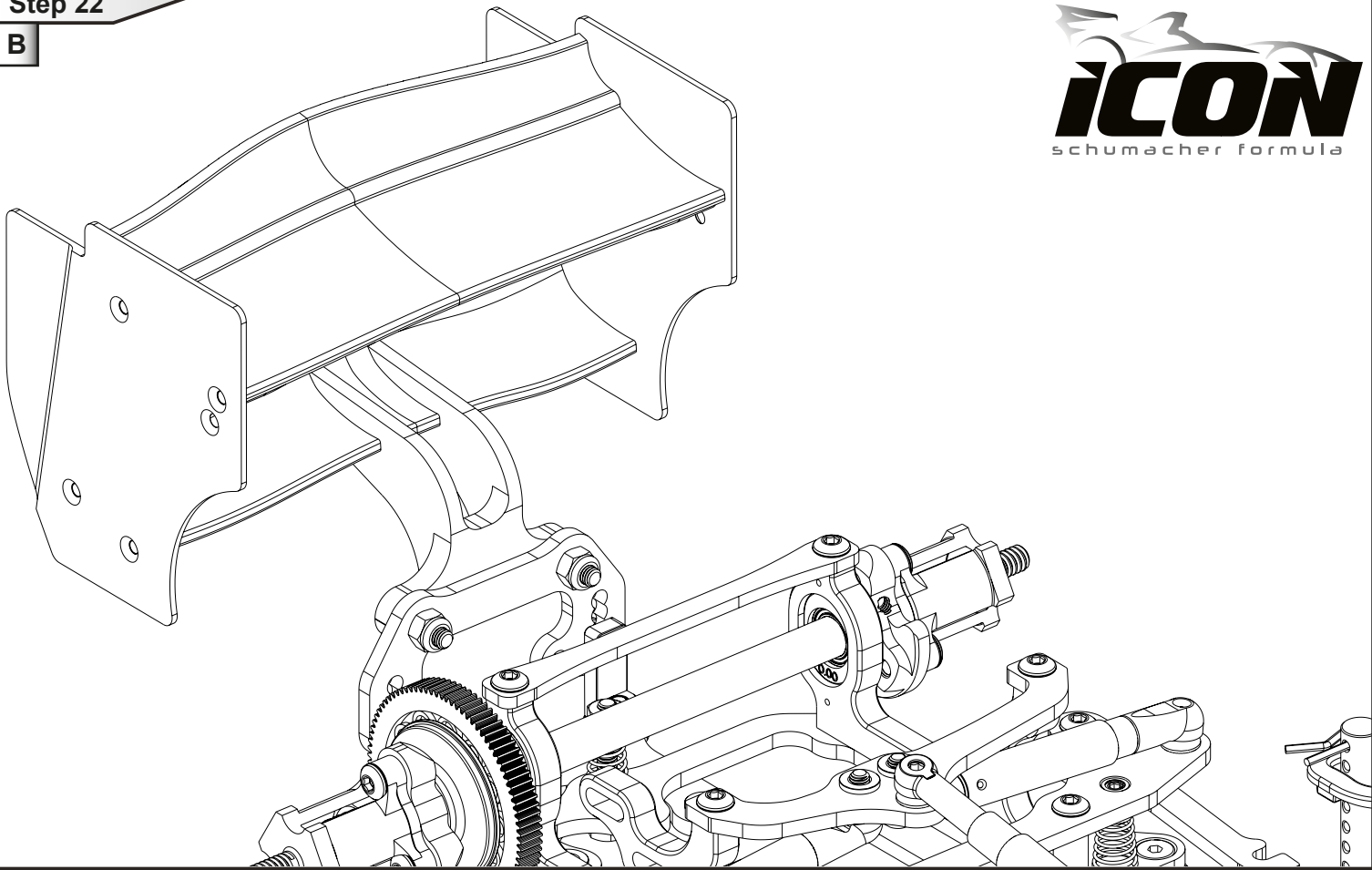
B



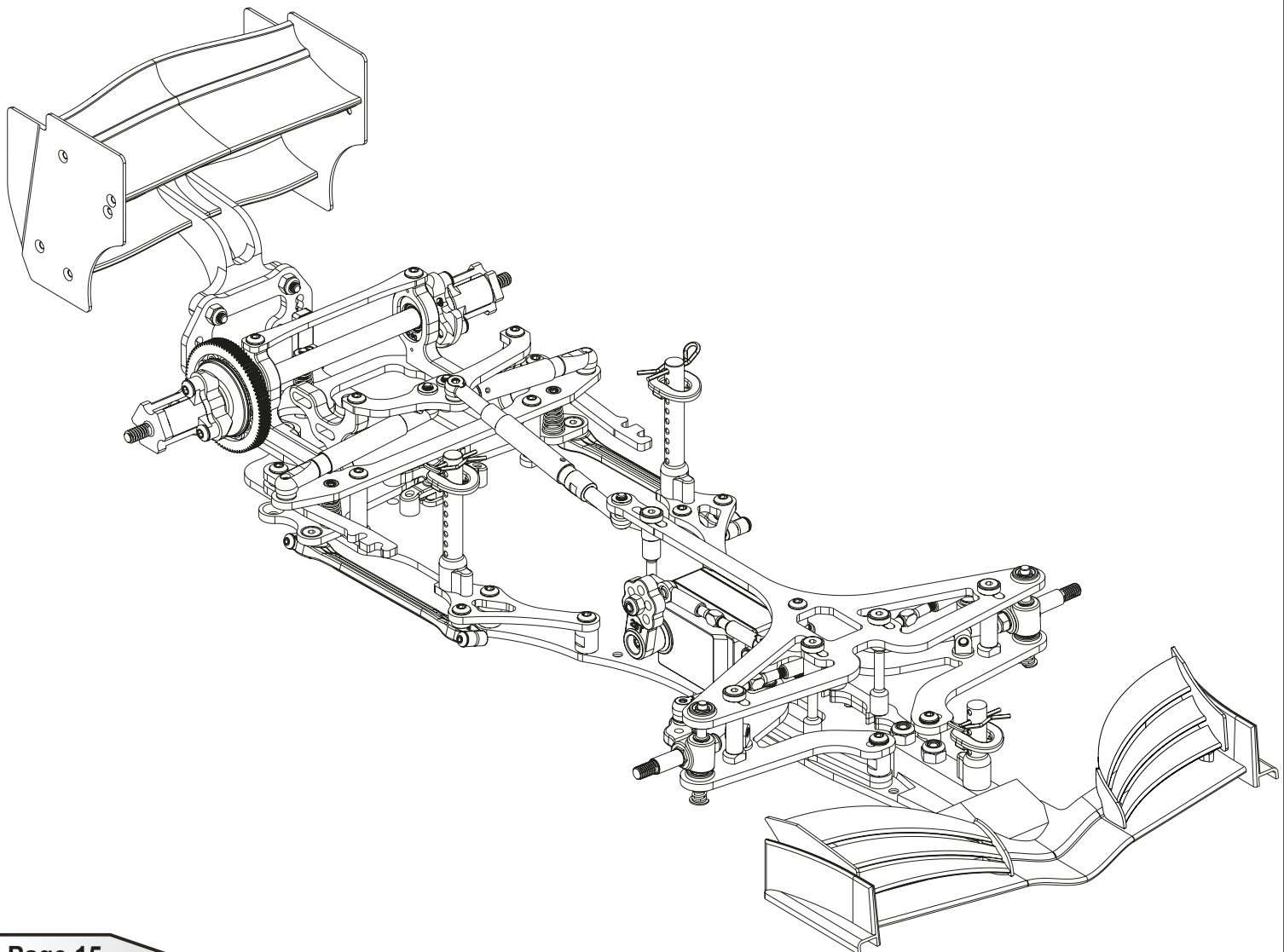
Step 22

A

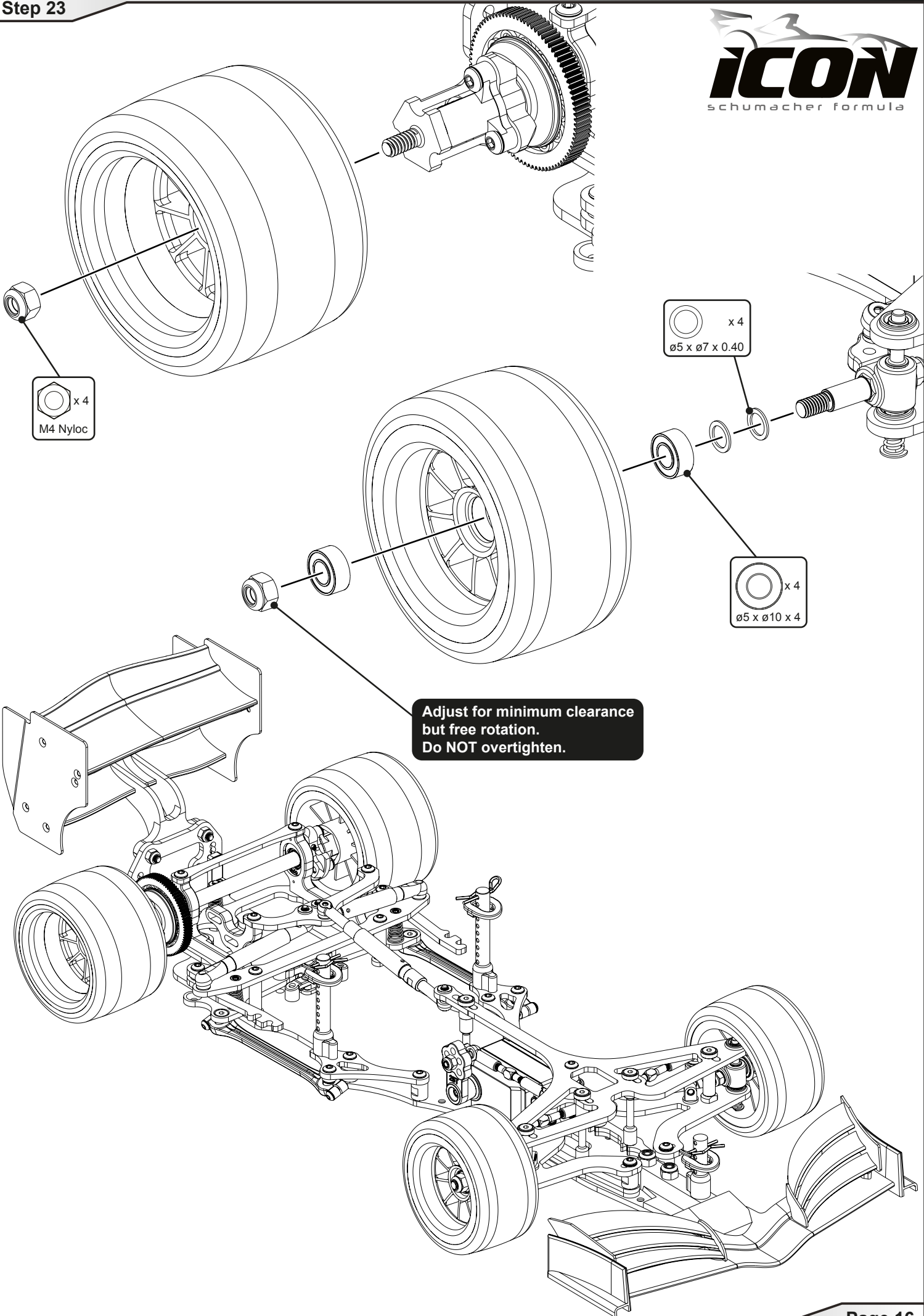




Assembled Car







Adjust for minimum clearance  
but free rotation.  
Do NOT overtighten.

Motor NOT included.

Pinion NOT included.

LiPo NOT included.

ESC NOT included.

x 2  
Black 1.0 mm

Servo Tape x 1

x 1  
M3 x 4

x 2  
M3 x 10

Receiver NOT included.

Transponder NOT included.

x 1  
M3 x 6

Adjust the gear mesh to be as close as possible without binding.



## Electric - Off Road Cars

K189 Icon - Formula 1 - Kit

### Chassis Parts

**U119** Aerial Tube - Pack 4  
**U4222** Turnbuckle Adjuster HTT - 39mm - pr  
**U4298** Turnbuckle HT - 35mm - pr  
**U4327** Alloy Servo Mount Black - K1/Mi5  
**U4627** Chassis Post Long - SS GT/At/Ecl  
**U4710** Alloy Servo Post - GT12-1/12th (pr)  
**U4741** 6mm Offset Servo Arms  
**U4773** Aerial Mount - CAT K2  
**U4849** Steering Arm Posts - Atom (pr)  
**U4950** Body Posts - Eclipse (4pcs)  
**U7488** Lipo O Ring - Eclipse 2 - (pk6)  
**U7864** Vertical Top Deck Posts - Mi7 (pr)  
**U7870** Hub Carriers - Atom 2 (pr)  
**U7891** Alloy Lock Stop - Atom 2 - pr  
**U7938** Chassis Post 8mm - Eclipse 3 (pr)  
**U8074** C/F Chassis - Icon  
**U8075** C/F Front Wishbone - Icon (pr)  
**U8076** C/F Camber Strap (2 deg) - Icon  
**U8077** C/F Ride Height Spacer - Icon (pr)  
**U8078** C/F Side Link Mount - Icon (pr)  
**U8079** C/F Side LiPo Stop - Icon (pr)  
**U8080** C/F Multi Mount - Icon  
**U8081** C/F Damper Mount - Icon  
**U8082** C/F Pod Rear Brace - Icon  
**U8083** C/F Pod Base - Icon  
**U8084** C/F Radius Arm - Icon  
**U8085** C/F Wing Mount Upper - Icon  
**U8086** C/F Wing Mount Lower - Icon  
**U8114** Alloy Steering Housing - Icon  
**U8118** Front Body Post - Icon  
**U8134** Manual - Icon  
**U8160** Steering Pivot - Icon

### Bodyshells and Decals

**MT010003** Montech F1 Electric Car 1/10 F1J Body  
**MT011003** Montech F1 Electric Car 1/10 F2011 Body  
**MT013012** Montech F1 Electric Car 1/10 F13 Body  
**MT015006** Montech Wing F1 Front Black  
**MT015007** Montech Wing F1 Rear Black  
**MT015008** Montech Wing F1 Rear White  
**MT015009** Montech Wing F1 Front White  
**MT017003** Montech F1 Car Body - F17  
**MT017006** Montech F1 2017 Front Wing Black  
**MT017007** Montech F1 2017 Front Wing White  
**MT018009** Montech F18 F1 Body  
**U8135** Decals - Icon

### Suspension

**U4274** Pro Ball Stud Short - pk4  
**U4302** Ball Socket Short (Black) - Mi5 - pk4  
**U4700** Pro Ball Stud - Ultra Long - (pk4)  
**U4847** Rear Spring Seat - At/Ecl  
**U4851** Side Spring Seat (pr) - Atom/Eclipse  
**U4968** Ball Sockets Low Profile -Eclipse - pk4  
**U7787** Shock Top Ball Dia 5.5mm - Mi7 (pk4)  
**U7832** Ball Stud Low (Ultra Short) (pk4)  
**U7833** Ball Stud Low (Short) (pk4)  
**U7871** Pivot Mouldings - Atom 2  
**U7872** Side Link - Atom 2 (pr)  
**U8087** Alloy Damper Body - Icon

### Suspension Cont....

**U8088** Damper Rod - Icon  
**U8115** Front King Pin - Icon (pr)  
**U8116** Front Axle - Icon (pr)  
**U8117** King Pin Spacer - Icon (pr)  
**U8136** Pivot Ball Assembly - Icon (pr)

### Transmission

**CR509** Kimbrough - Thin Pro/Gear 88T - 64DP-#709  
**U4112** S/Steel Shims 1/4x5/16x0.10 pk6  
**U4808** "1/8"" Chrome Steel Ball -At/Ecl - pk12"  
**U4855** Diff Washer - Atom/Eclipse - pr  
**U4861** Diff Rebuild Kit - Atom/Eclipse  
**U4972** Ride Height Adjusters- 0.00, 0.50, 1.00, 1.50 4prs  
**U4973** Ride Height Adjusters- 0.25, 0.75, 1.25, 1.75 4prs  
**U4974** LH Wheel Clamp - Eclipse  
**U7883** Steel Diff Axle - Atom 2  
**U7899** Diff Spacer Set - Atom 2  
**U8104** Wheel Hex Clamp - Icon  
**U8112** Alloy Trans Housing RH - Icon  
**U8113** Alloy Trans Housing LH - Icon  
**U8120** Alloy Washer Carrier RH - Icon

### Bearings and Balls

**U2148** Ball Bearing - 5x10x4 Shield - (pr)  
**U3075** Ball Bearing - 4x8x3mm Red Seal - (pr)  
**U4809** Ball Bearing - 1/4x3/8x1/8 Shield - (pr)  
**U4980** Ball Bearing - 1/4x3/8x1/8 Flanged Shielded - (pr)

### Springs

**U4838** Rear Springs Black - Soft - At/Ecl - pr  
**U4839** Rear Springs Silver - Med/Soft - At/Ecl - pr  
**U4840** Rear Springs Gold -Med/Hard - At/Ecl - pr  
**U4841** Rear Springs Nickel - Hard - At/Ecl - pr  
**U4846** Spring Tuning Set Rear - At/Ecl  
**U7322** Rear Spring Red Dot-Hard/Ultra-Atom/Eclipse-pr  
**U7323** Rear Spring Black - Ultra - Atom/Eclipse - pr  
**U7886** Front Spring Black Soft - Atom 2 (pr)  
**U7887** Front Spring Silver Medium - Atom 2 (pr)  
**U7888** Front Spring Silver Medium - Atom 2 (pr)  
**U7889** Front Spring Gold Super Hard - Atom 2 (pr)  
**U7890** Front Spring Tuning Set (4prs) - Atom 2

### Hardware

**U1549** SPEED PACK - M4 Nuts and Washers  
**U1551** SPEED PACK - E Clips -2 x 8pcs  
**U1552** SPEED PACK - R Clips  
**U1606** SPEED PACK - Servo Tape - 30pk  
**U2128** SPEED PACK - Grub-Set Screws M3 M4  
**U3021** SPEED PACK - M3x6 Csk Hd - (pk10)  
**U3022** SPEED PACK - M3x8 Csk Hd - (pk10)  
**U3023** SPEED PACK - M3x10 Csk Hd - (pk10)  
**U3572** SPEED PACK - M3x14 Grub Screw pk4  
**U4124** SPEED PACK - Shims 5 x 7 x 0.4mm - pk6  
**U4155** SPEED PACK - M3 Csk Washers - Black Alloy (pk10)  
**U4241** SPEED PACK - M3 Alloy Nyloc Nuts - Black - pk10  
**U4650** SPEED PACK - M3 Nyloc Nut Steel - Black (10pcs)  
**U4835** SPEED PACK - M3 Steel Nut Black (pk8)  
**U4837** SPEED PACK M2.5x10 Cap Hd (pk8)  
**U4862** Black Alloy Washers 0.50mm (pk12)



## Hardware Cont....

<b>U4987</b>	SPEED PACK Needle Roller 1.5x11.8 (pk8)
<b>U7102</b>	SPEED PACK - M3x4 Button Hd (pk10)
<b>U7103</b>	SPEED PACK - M3x6 Button Hd (pk10)
<b>U7104</b>	SPEED PACK - M3x8 Button Hd (pk10)
<b>U7105</b>	SPEED PACK - M3x10 Button Hd (pk10)
<b>U7106</b>	SPEED PACK - M3x12 Button Hd (pk10)
<b>U7107</b>	SPEED PACK - M3x16 Button Hd (pk10)
<b>U7109</b>	SPEED PACK - M3x25 Button Hd (pk10)
<b>U7113</b>	SPEED PACK - M3x10 Cap Hd (pk10)
<b>U7122</b>	SPEED PACK - M3x12 Csk Hd (pk10)
<b>U7125</b>	SPEED PACK - M3x25 Csk Hd (pk10)
<b>U7689</b>	M3 Brass Inserts - pk10
<b>U7709</b>	M3 Black Alloy Washers 0.75mm (pk10)
<b>U7710</b>	M3 Black Alloy Washers 1.00mm (pk10)
<b>U7711</b>	M3 Black Alloy Washers 2.00mm (pk10)
<b>U7712</b>	M3 Black Alloy Washers 3.00mm (pk10)
<b>U7743</b>	M2.5 X 8 Button Screws (pk10)
<b>U7884</b>	M3x6 Grub Screw Dome End (pk4)
<b>U8089</b>	M3 Alloy Washer Black 4.0 mm (pk10)
<b>U8132</b>	M4 X 18 CSK (pk10)
<b>U8133</b>	6 x 1 'O'ring (pk10)

## Option Parts

<b>AM648068</b>	Super Diff Gear 48P 68T
<b>AM648072</b>	Super Diff Gear 48P 72T
<b>AM648074</b>	Super Diff Gear 48P 74T
<b>AM648076</b>	Super Diff Gear 48P 76T
<b>AM648080</b>	Super Diff Gear 48P 80T
<b>AM648084</b>	Super Diff Gear 48P 84T
<b>AM664070</b>	Super Diff Gear 64P 70T
<b>AM664074</b>	Super Diff Gear 64P 74T
<b>AM664078</b>	Super Diff Gear 64P 78T
<b>AM664080</b>	Super Diff Gear 64P 80T
<b>AM664082</b>	Super Diff Gear 64P 82T
<b>AM664086</b>	Super Diff Gear 64P 86T
<b>AM664090</b>	Super Diff Gear 64P 90T
<b>AM664094</b>	Super Diff Gear 64P 94T
<b>AM664098</b>	Super Diff Gear 64P 98T
<b>AM664102</b>	Super Diff Gear 64P 102T
<b>AM664106</b>	Super Diff Gear 64P 106T
<b>AM664110</b>	Super Diff Gear 64P 110T
<b>AX009</b>	Aerox Alloy Servo Arm - Short 25T Futaba
<b>AX010</b>	Aerox Alloy Servo Arm - Short 23T KO/Sanwa
<b>CR024</b>	CORE RC - Serrated M4 Steel Wheel Nut pk4
<b>CR035</b>	CORE RC - Serrated Alloy M4 Nuts; Blue pk 4
<b>CR036</b>	CORE RC - Serrated Alloy M4 Nuts; Violet pk 4
<b>CR192</b>	Alloy Servo Arm 25T - Futaba Short
<b>CR193</b>	Alloy Servo Arm 23T - KO/Sanwa Short
<b>CR196</b>	CORE RC - Serrated Alloy M4 Nuts - Black - pk4
<b>CR280</b>	Ti Pro Ball Studs - Short - (pr)
<b>CR304</b>	Titanium Wheel Nuts M4 - pk4
<b>CR310</b>	Alloy Csk Hex Screws M3 x 6 pk10
<b>CR311</b>	Alloy Csk Hex Screws M3 x 8 pk10
<b>CR312</b>	Alloy Csk Hex Screws M3 x 10 pk10
<b>CR313</b>	Alloy Csk Hex Screws M3 x 12 pk10
<b>CR314</b>	Alloy Button Head Hex Screws M3 x 6 pk10
<b>CR315</b>	Alloy Button Head Hex Screws M3 x 8 pk10
<b>CR316</b>	Alloy Button Head Hex Screws M3 x 10 pk10
<b>CR317</b>	Alloy Button Head Hex Screws M3 x 12 pk10
<b>CR320</b>	Titanium Csk Hex Screws M3 x 6 pk10
<b>CR321</b>	Titanium Csk Hex Screws M3 x 8 pk10
<b>CR322</b>	Titanium Csk Hex Screws M3 x 10 pk10
<b>CR323</b>	Titanium Csk Hex Screws M3 x 12 pk10

## Option Parts Cont....

<b>CR327</b>	Titanium Button Head Hex Screws M3 x 6 pk10
<b>CR328</b>	Titanium Button Head Hex Screws M3 x 8 pk10
<b>CR329</b>	Titanium Button Head Hex Screws M3 x 10 pk10
<b>CR330</b>	Titanium Button Head Hex Screws M3 x 12 pk10
<b>CR507</b>	Kimrough - Spur Gear 94T - 64DP - #229
<b>CR508</b>	Kimrough - Precision Gear 64T-48DP-#300
<b>CR510</b>	Kimrough - Spur Gear 66T - 48DP - #301
<b>CR511</b>	Kimrough - Spur Gear 69T - 48DP - #150
<b>CR512</b>	Kimrough - Spur Gear 72T - 48DP - #143
<b>CR513</b>	Kimrough - Spur Gear 78T - 64DP - #202
<b>CR515</b>	Kimrough - Spur Gear 76T - 64DP - #199
<b>CR664</b>	Alloy Motor Spacer - 1mm - pk2
<b>CR721</b>	1/12 Carbon Spool Axle + Clamp
<b>CRW48060</b>	Diff Spur 48DP - 60T - for Diff or Spool Axle
<b>U1954</b>	Pro - Thrust Bearing
<b>U2135</b>	M4 Nyloc Wheel Nut - Purple Alloy (pk4)
<b>U2810</b>	M4 Nyloc Wheel Nut - Red Alloy (pk4)
<b>U2811</b>	M4 Nyloc Wheel Nut - Blue Alloy (pk4)
<b>U2812</b>	M4 Nyloc Wheel Nut - Black Alloy (pk4)
<b>U3582</b>	Precision Balance Pivot Set
<b>U4328</b>	Impact Servo Saver
<b>U4811</b>	"1/8"" Silicone Nitride Ball (pk12)"
<b>U4946</b>	Pro Ball Bearing 5 x 10 x 4 Sealed - pr
<b>U4970</b>	C/F Rear Axle - Eclipse
<b>U7690</b>	Pro Ball Bearings 1/4 x 3/8 x 1/8 FI Shielded
<b>U7730</b>	Pro-Ball Bearing 4x8x3 Sealed - (pr)
<b>U7774</b>	M3 Alloy Washer Black 1.5 mm (pk10)
<b>U7825</b>	Titanium Pivot Ball 5.5mm Low (pr)
<b>U7828</b>	Titanium Ball Stud Low (Ultra Short) (pk4)
<b>U7897</b>	Alloy Pivot Spacer 1mm - Atom 2 (pr)
<b>U7918</b>	Alloy Pivot Mount - Atom 2
<b>U7919</b>	Alloy Pivot Block - Atom 2
<b>U7943</b>	Alloy Spacer Clip 0.5mm (pk4)
<b>U7944</b>	Alloy Spacer Clip 0.75mm (pk4)
<b>U8065</b>	M3 Alloy Thread Inserts - pk8
<b>U8121</b>	Alloy Ride Height Spacer 0.75mm - Icon (pr)
<b>U8122</b>	Alloy Ride Height Spacer 0.50mm - Icon (pr)
<b>U8123</b>	C/F Camber Strap -6mm Width 2deg - Icon
<b>U8124</b>	C/F Camber Strap 1.5deg - Icon
<b>U8125</b>	Alloy Hub Carriers - Icon (pr)
<b>U8126</b>	Mass Damper Shaft
<b>U8127</b>	Alloy Chassis - Icon
<b>U8128</b>	Mass Damper Weight 23g
<b>U8129</b>	Mass Damper Weight 12g
<b>U8130</b>	Front Spring Red Dot - Eclipse 3 (pr)
<b>U8131</b>	Front Spring Green Dot - Eclipse 3 (pr)
<b>U8137</b>	Mass Damper Set

## Pinions

<b>CR4815</b>	Pinion Gear 48DP 15T (7075 Hard)
<b>CR4816</b>	Pinion Gear 48DP 16T (7075 Hard)
<b>CR4817</b>	Pinion Gear 48DP 17T (7075 Hard)
<b>CR4818</b>	Pinion Gear 48DP 18T (7075 Hard)
<b>CR4819</b>	Pinion Gear 48DP 19T (7075 Hard)
<b>CR4820</b>	Pinion Gear 48DP 20T (7075 Hard)
<b>CR4821</b>	Pinion Gear 48DP 21T (7075 Hard)
<b>CR4822</b>	Pinion Gear 48DP 22T (7075 Hard)
<b>CR4823</b>	Pinion Gear 48DP 23T (7075 Hard)
<b>CR4824</b>	Pinion Gear 48DP 24T (7075 Hard)

## Pinions

**CR4825** Pinion Gear 48DP 25T (7075 Hard)  
**CR4826** Pinion Gear 48DP 26T (7075 Hard)  
**CR4827** Pinion Gear 48DP 27T (7075 Hard)  
**CR4828** Pinion Gear 48DP 28T (7075 Hard)  
**CR4829** Pinion Gear 48DP 29T (7075 Hard)  
**CR4830** Pinion Gear 48DP 30T (7075 Hard)  
**CR4831** Pinion Gear 48DP 31T (7075 Hard)  
**CR4832** Pinion Gear 48DP 32T (7075 Hard)  
**CR4833** Pinion Gear 48DP 33T (7075 Hard)  
**CR4834** Pinion Gear 48DP 34T (7075 Hard)  
**CR4835** Pinion Gear 48DP 35T (7075 Hard)  
**CR4836** Pinion Gear 48DP 36T (7075 Hard)  
**CR4837** Pinion Gear 48DP 37T (7075 Hard)  
**CR4838** Pinion Gear 48DP 38T (7075 Hard)  
**CR4839** Pinion Gear 48DP 39T (7075 Hard)  
**CR4840** Pinion Gear 48DP 40T (7075 Hard)  
**CR4841** Pinion Gear 48DP 41T (7075 Hard)  
**CR4842** Pinion Gear 48DP 42T (7075 Hard)  
**CR6418** Pinion Gear 64DP 18T (7075 Hard)  
**CR6419** Pinion Gear 64DP 19T (7075 Hard)  
**CR6420** Pinion Gear 64DP 20T (7075 Hard)  
**CR6421** Pinion Gear 64DP 21T (7075 Hard)  
**CR6422** Pinion Gear 64DP 22T (7075 Hard)  
**CR6423** Pinion Gear 64DP 23T (7075 Hard)  
**CR6424** Pinion Gear 64DP 24T (7075 Hard)  
**CR6425** Pinion Gear 64DP 25T (7075 Hard)  
**CR6426** Pinion Gear 64DP 26T (7075 Hard)  
**CR6427** Pinion Gear 64DP 27T (7075 Hard)  
**CR6428** Pinion Gear 64DP 28T (7075 Hard)  
**CR6429** Pinion Gear 64DP 29T (7075 Hard)  
**CR6430** Pinion Gear 64DP 30T (7075 Hard)  
**CR6431** Pinion Gear 64DP 31T (7075 Hard)  
**CR6432** Pinion Gear 64DP 32T (7075 Hard)  
**CR6433** Pinion Gear 64DP 33T (7075 Hard)  
**CR6434** Pinion Gear 64DP 34T (7075 Hard)  
**CR6435** Pinion Gear 64DP 35T (7075 Hard)  
**CR6436** Pinion Gear 64DP 36T (7075 Hard)  
**CR6437** Pinion Gear 64DP 37T (7075 Hard)  
**CR6438** Pinion Gear 64DP 38T (7075 Hard)  
**CR6439** Pinion Gear 64DP 39T (7075 Hard)  
**CR6440** Pinion Gear 64DP 40T (7075 Hard)  
**CR6441** Pinion Gear 64DP 41T (7075 Hard)  
**CR6442** Pinion Gear 64DP 42T (7075 Hard)  
**CR6443** Pinion Gear 64DP 43T (7075 Hard)  
**CR6444** Pinion Gear 64DP 44T (7075 Hard)  
**CR6445** Pinion Gear 64DP 45T (7075 Hard)  
**CR6446** Pinion Gear 64DP 46T (7075 Hard)  
**CR6447** Pinion Gear 64DP 47T (7075 Hard)  
**CR6448** Pinion Gear 64DP 48T (7075 Hard)  
**CR6449** Pinion Gear 64DP 49T (7075 Hard)  
**CR6450** Pinion Gear 64DP 50T (7075 Hard)  
**CR6451** Pinion Gear 64DP 51T (7075 Hard)  
**CR6452** Pinion Gear 64DP 52T (7075 Hard)  
**CR6453** Pinion Gear 64DP 53T (7075 Hard)  
**CR6454** Pinion Gear 64DP 54T (7075 Hard)  
**CR6455** Pinion Gear 64DP 55T (7075 Hard)  
**CR6456** Pinion Gear 64DP 56T (7075 Hard)  
**CR6457** Pinion Gear 64DP 57T (7075 Hard)  
**CR6458** Pinion Gear 64DP 58T (7075 Hard)  
**CR6459** Pinion Gear 64DP 59T (7075 Hard)  
**CR6460** Pinion Gear 64DP 60T (7075 Hard)  
**CR6461** Pinion Gear 64DP 61T (7075 Hard)  
**CR6462** Pinion Gear 64DP 62T (7075 Hard)

## Pinions Cont....

**CR6463** Pinion Gear 64DP 63T (7075 Hard)  
**U3415** Pinion; Hard Alloy 48dp - 15T  
**U3416** Pinion; Hard Alloy 48dp - 16T  
**U3417** Pinion; Hard Alloy 48dp - 17T  
**U3418** Pinion; Hard Alloy 48dp - 18T  
**U3419** Pinion; Hard Alloy 48dp - 19T  
**U3420** Pinion; Hard Alloy 48dp - 20T  
**U3421** Pinion; Hard Alloy 48dp - 21T  
**U3422** Pinion; Hard Alloy 48dp - 22T  
**U3423** Pinion; Hard Alloy 48dp - 23T  
**U3424** Pinion; Hard Alloy 48dp - 24T  
**U3425** Pinion; Hard Alloy 48dp - 25T  
**U3426** Pinion; Hard Alloy 48dp - 26T  
**U3427** Pinion; Hard Alloy 48dp - 27T  
**U3428** Pinion; Hard Alloy 48dp - 28T  
**U3429** Pinion; Hard Alloy 48dp - 29T  
**U3430** Pinion; Hard Alloy 48dp - 30T  
**U3431** Pinion; Hard Alloy 48dp - 31T  
**U3432** Pinion; Hard Alloy 48dp - 32T  
**U3433** Pinion; Hard Alloy 48dp - 33T  
**U3434** Pinion; Hard Alloy 48dp - 34T  
**U3435** Pinion; Hard Alloy 48dp - 35T  
**U3436** Pinion; Hard Alloy 48dp - 36T  
**U3437** Pinion; Hard Alloy 48dp - 37T  
**U3438** Pinion; Hard Alloy 48dp - 38T  
**U3439** Pinion; Hard Alloy 48dp - 39T  
**U3440** Pinion; Hard Alloy 48dp - 40T  
**U3619** Pinion; Hard Alloy 64dp - 19T  
**U3620** Pinion; Hard Alloy 64dp - 20T  
**U3621** Pinion; Hard Alloy 64dp - 21T  
**U3622** Pinion; Hard Alloy 64dp - 22T  
**U3623** Pinion; Hard Alloy 64dp - 23T  
**U3624** Pinion; Hard Alloy 64dp - 24T  
**U3625** Pinion; Hard Alloy 64dp - 25T  
**U3626** Pinion; Hard Alloy 64dp - 26T  
**U3627** Pinion; Hard Alloy 64dp - 27T  
**U3628** Pinion; Hard Alloy 64dp - 28T  
**U3629** Pinion; Hard Alloy 64dp - 29T  
**U3630** Pinion; Hard Alloy 64dp - 30T  
**U3631** Pinion; Hard Alloy 64dp - 31T  
**U3632** Pinion; Hard Alloy 64dp - 32T  
**U3633** Pinion; Hard Alloy 64dp - 33T  
**U3634** Pinion; Hard Alloy 64dp - 34T  
**U3635** Pinion; Hard Alloy 64dp - 35T  
**U3636** Pinion; Hard Alloy 64dp - 36T  
**U3637** Pinion; Hard Alloy 64dp - 37T  
**U3638** Pinion; Hard Alloy 64dp - 38T  
**U3639** Pinion; Hard Alloy 64dp - 39T  
**U3640** Pinion; Hard Alloy 64dp - 40T  
**U3641** Pinion; Hard Alloy 64dp - 41T  
**U3642** Pinion; Hard Alloy 64dp - 42T  
**U3643** Pinion; Hard Alloy 64dp - 43T  
**U3644** Pinion; Hard Alloy 64dp - 44T  
**U3645** Pinion; Hard Alloy 64dp - 45T  
**U3646** Pinion; Hard Alloy 64dp - 46T  
**U3647** Pinion; Hard Alloy 64dp - 47T  
**U3648** Pinion; Hard Alloy 64dp - 48T  
**U3649** Pinion; Hard Alloy 64dp - 49T  
**U3650** Pinion; Hard Alloy 64dp - 50T



- AM648068 Super Diff Gear 48P 68T
- AM648072 Super Diff Gear 48P 72T
- AM648074 Super Diff Gear 48P 74T
- AM648076 Super Diff Gear 48P 76T
- AM648080 Super Diff Gear 48P 80T
- AM648084 Super Diff Gear 48P 84T
- AM664070 Super Diff Gear 64P 70T
- AM664074 Super Diff Gear 64P 74T
- AM664078 Super Diff Gear 64P 78T
- AM664080 Super Diff Gear 64P 80T
- AM664082 Super Diff Gear 64P 82T
- AM664086 Super Diff Gear 64P 86T
- AM664090 Super Diff Gear 64P 90T
- AM664094 Super Diff Gear 64P 94T
- AM664098 Super Diff Gear 64P 98T
- AM664102 Super Diff Gear 64P 102T
- AM664106 Super Diff Gear 64P 106T
- AM664110 Super Diff Gear 64P 110T
- CR507 Kimbrough - Spur Gear 94T - 64DP - #229
- CR508 Kimbrough - Precision Gear 64T-48DP-#300
- CR510 Kimbrough - Spur Gear 66T - 48DP - #301
- CR511 Kimbrough - Spur Gear 69T - 48DP - #150
- CR512 Kimbrough - Spur Gear 72T - 48DP - #143
- CR513 Kimbrough - Spur Gear 78T - 64DP - #202
- CR515 Kimbrough - Spur Gear 76T - 64DP - #199
- CRW48060 Diff Spur 48DP - 60T - for Diff or Spool Axle



- AX009 Aerex Alloy Servo Arm - Short 25T Futaba
- AX010 Aerex Alloy Servo Arm - Short 23T KO/Sanwa
- CR192 Alloy Servo Arm 25T - Futaba Short
- CR193 Alloy Servo Arm 23T - KO/Sanwa Short



- CR024 CORE RC - Serrated M4 Steel Wheel Nut pk4
- CR035 CORE RC - Serrated Alloy M4 Nuts; Blue pk 4
- CR036 CORE RC - Serrated Alloy M4 Nuts; Violet pk 4
- CR196 CORE RC - Serrated Alloy M4 Nuts - Black - pk4
- CR304 Titanium Wheel Nuts M4 - pk4
- U2135 M4 Nyloc Wheel Nut - Purple Alloy (pk4)
- U2810 M4 Nyloc Wheel Nut - Red Alloy (pk4)
- U2811 M4 Nyloc Wheel Nut - Blue Alloy (pk4)
- U2812 M4 Nyloc Wheel Nut - Black Alloy (pk4)



- CR280 Ti Pro Ball Studs - Short - (pr)
- U7828 Titanium Ball Stud Low (Ultra Short) (pk4)



- CR310 Alloy Csk Hex Screws M3 x 6 pk10
- CR311 Alloy Csk Hex Screws M3 x 8 pk10
- CR312 Alloy Csk Hex Screws M3 x 10 pk10
- CR313 Alloy Csk Hex Screws M3 x 12 pk10
- CR314 Alloy Button Head Hex Screws M3 x 6 pk10
- CR315 Alloy Button Head Hex Screws M3 x 8 pk10
- CR316 Alloy Button Head Hex Screws M3 x 10 pk10
- CR317 Alloy Button Head Hex Screws M3 x 12 pk10
- CR320 Titanium Csk Hex Screws M3 x 6 pk10
- CR321 Titanium Csk Hex Screws M3 x 8 pk10
- CR322 Titanium Csk Hex Screws M3 x 10 pk10
- CR323 Titanium Csk Hex Screws M3 x 12 pk10
- CR327 Titanium Button Head Hex Screws M3 x 6 pk10
- CR328 Titanium Button Head Hex Screws M3 x 8 pk10
- CR329 Titanium Button Head Hex Screws M3 x 10 pk10
- CR330 Titanium Button Head Hex Screws M3 x 12 pk10



- CR664 Alloy Motor Spacer - 1mm - pk2



- U1954 Pro - Thrust Bearing
- U4811 "1/8"" Silicone Nitride Ball (pk12)"



CR721 1/12 Carbon Spool Axle + Clamp  
U4970 C/F Rear Axle - Eclipse



U4946 Pro Ball Bearing 5 x 10 x 4 sealed - pr  
U7690 Pro Ball Bearings 1/4 x 3/8 x 1/8 FI Shielded  
U7730 Pro-Ball Bearing 4x8x3 Sealed - (pr)



U7774 M3 Alloy Washer Black 1.5 mm (pk10)



U7825 Titanium Pivot Ball 5.5mm Low (pr)



U7943 Alloy Spacer Clip 0.5mm (pk4)  
U7944 Alloy Spacer Clip 0.75mm (pk4)



U8121 Alloy Ride Height Spacer 0.75mm - Icon (pr)  
U8122 Alloy Ride Height Spacer 0.50mm - Icon (pr)



U8126 Mass Damper Shaft  
U8128 Mass Damper Weight 23g  
U8129 Mass Damper Weight 12g  
U8130 Front Spring Red Dot - Eclipse 3 (pr)  
U8131 Front Spring Green Dot - Eclipse 3 (pr)  
U8137 Mass Damper Set



U3582 Precision Balance Pivot Set



U7897 Alloy Pivot Spacer 1mm - Atom 2 (pr)  
U7918 Alloy Pivot Mount - Atom 2  
U7919 Alloy Pivot Block - Atom 2



U8065 M3 Alloy Thread Inserts - pk8



U8123 C/F Camber Strap -6mm Width 2deg - Icon  
U8124 C/F Camber Strap 1.5deg - Icon



U8125 Alloy Hub Carriers - Icon (pr)

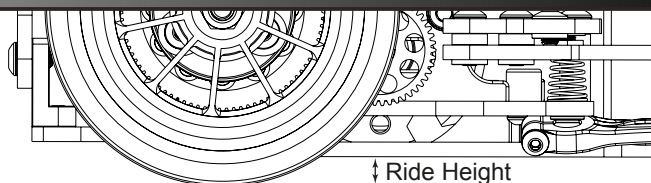


U8127 Alloy Chassis - Icon

Ride Height

In general always run the car as low as possible, without the chassis grounding out.

A good starting point is 4.5mm front, 5.0mm rear.



Damping

Roll Damping

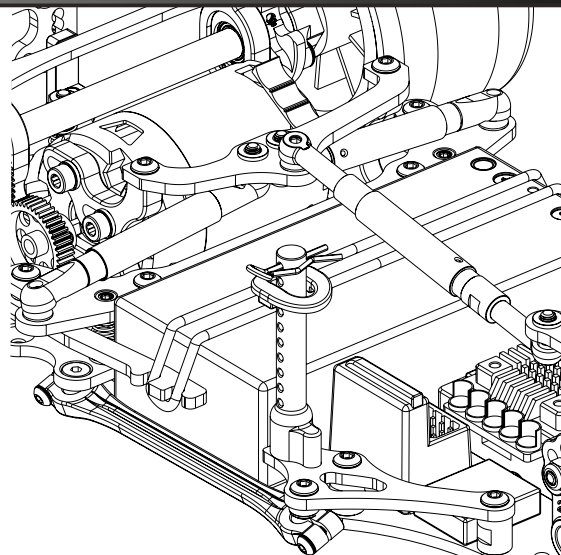
Thicker roll damping oil slows the weight transfer of the rear and makes the car easier to drive on corner entry. Rear stability in the middle of the corner may be lower. Thicker oil can also help if the track surface is bumpy and there are issues with bumps in the middle of the corner.

A good range is between 10,000cSt and 50,000cSt

Bump Damping

Thicker bump damping oil slows the weight transfer of the rear and makes the car easier to drive when coming off power. Thicker oil can help if the track surface is bumpy and there are issues with bumps when the car is moving in a straight line.

A good range is between 15,000cSt and 100,000cSt



Gear Ratio

Gear Chart 48DP

Spur

Maximum Tooth Sum = 102T  
Minimum Tooth Sum = 80T

Gear Chart 64DP

Spur

Maximum Tooth Sum = 136T  
Minimum Tooth Sum = 107T

Pinion	48dp	60	64	66	68	69	72	74	76	80	84
	15			4.40	4.53	4.60	4.80	4.93	5.07	5.33	5.60
	16		4.00	4.13	4.25	4.31	4.50	4.63	4.75	5.00	5.25
	17		3.76	3.88	4.00	4.06	4.24	4.35	4.47	4.71	4.94
	18		3.56	3.67	3.78	3.83	4.00	4.11	4.22	4.44	4.67
	19		3.37	3.47	3.58	3.63	3.79	3.89	4.00	4.21	
	20	3.00	3.20	3.30	3.40	0.18	3.60	3.70	3.80	4.00	
	21	2.86	3.05	3.14	3.24	3.29	3.43	3.52	3.62	3.81	
	22	2.73	2.91	3.00	3.09	3.14	3.27	3.36	3.45	3.64	
	23	2.61	2.78	2.87	2.96	3.00	3.13	3.22	3.30		
	24	2.50	2.67	2.75	2.83	2.88	3.00	3.08	3.17		
	25	2.40	2.56	2.64	2.72	2.76	2.88	2.96	3.04		
	26	2.31	2.46	2.54	2.62	2.65	2.77	2.85	2.92		
	27	2.22	2.37	2.44	2.52	2.56	2.67	2.74			
	28	2.14	2.29	2.36	2.43	2.46	2.57	2.64			
	29	2.07	2.21	2.28	2.34	2.38	2.48				
	30	2.00	2.13	2.20	2.27	2.30	2.40				
	31	1.94	2.06	2.13	2.19	2.23					
	32	1.88	2.00	2.06	2.13	2.16					
	33	1.82	1.94	2.00	2.06	2.09					
34	1.76	1.88	1.94	2.00							
35	1.71	1.83	1.89								
36	1.67	1.78	1.83								
37	1.62	1.73									
38	1.58	1.68									
39	1.54										
40	1.50										
41	1.46										
42	1.43										

Pinion	64dp	64	72	74	76	78	80	82	86	88	90	94	98	102	106	110	
	18										5.00	5.22	5.44	5.67	5.58	6.11	
	19										4.63	4.74	4.95	5.16	5.37	5.30	5.79
	20										4.40	4.50	4.70	4.90	5.10	5.05	5.50
	21									4.10	4.19	4.29	4.48	4.67	4.86	4.82	5.24
	22									3.91	4.00	4.09	4.27	4.45	4.64	4.61	5.00
	23									3.74	3.83	3.91	4.09	4.26	4.43	4.42	4.78
	24									3.58	3.67	3.75	3.92	4.08	4.25	4.24	4.58
	25									3.28	3.44	3.52	3.60	3.76	3.92	4.08	4.40
	26									3.15	3.31	3.38	3.46	3.62	3.77	3.92	4.23
	27							2.96	3.04	3.19	3.26	3.33	3.48	3.63	3.78	3.79	
	28							2.86	2.93	3.07	3.14	3.21	3.36	3.50	3.64	3.66	
	29						2.69	2.76	2.83	2.97	3.03	3.10	3.24	3.38	3.52	3.53	
	30						2.60	2.67	2.73	2.87	2.93	3.00	3.13	3.27	3.40	3.53	
	31					2.45	2.52	2.58	2.65	2.77	2.84	2.90	3.03	3.16	3.29		
	32					2.38	2.44	2.50	2.56	2.69	2.75	2.81	2.94	3.06	3.19		
	33			2.24	2.30	2.36	2.42	2.48	2.61	2.67	2.73	2.85	2.97	3.09			
	34			2.18	2.24	2.29	2.35	2.41	2.53	2.59	2.65	2.76	2.88	3.00			
	35		2.06	2.11	2.17	2.23	2.29	2.34	2.46	2.51	2.57	2.69	2.80				
	36		2.00	2.06	2.11	2.17	2.22	2.28	2.39	2.44	2.50	2.61	2.72				
37		1.95	2.00	2.05	2.11	2.16	2.22	2.32	2.38	2.43	2.54	2.65					
38		1.89	1.95	2.00	2.05	2.11	2.16	2.26	2.32	2.37	2.47	2.58					
39		1.85	1.90	1.95	2.00	2.05	2.10	2.21	2.26	2.31	2.41						
40		1.80	1.85	1.90	1.95	2.00	2.05	2.15	2.20	2.25	2.35						
41		1.76	1.80	1.85	1.90	1.95	2.00	2.10	2.15	2.20	2.29						
42		1.71	1.76	1.81	1.86	1.90	1.95	2.05	2.10	2.14	2.24						
43	1.49	1.67	1.72	1.77	1.81	1.86	1.91	2.00	2.05	2.09							
44	1.45	1.64	1.68	1.73	1.77	1.82	1.86	1.95	2.00	2.05							
45	1.42	1.60	1.64	1.69	1.73	1.78	1.82	1.91	1.96	2.00							
46	1.39	1.57	1.61	1.65	1.70	1.74	1.78	1.87	1.91	1.96							
47	1.36	1.53	1.57	1.62	1.66	1.70	1.74	1.83	1.87								
48	1.33	1.50	1.54	1.58	1.63	1.67	1.71	1.79	1.83								
49	1.31	1.47	1.51	1.55	1.59	1.63	1.67	1.76									
50	1.28	1.44	1.48	1.52	1.56	1.60	1.64	1.72									
51	1.25	1.41	1.45	1.49	1.53	1.57	1.61										
52	1.23	1.38	1.42	1.46	1.50	1.54	1.58										
53	1.21	1.36	1.40	1.43	1.47	1.51	1.55										
54	1.19	1.33	1.37	1.41	1.44	1.48	1.52										
55	1.16	1.31	1.35	1.38	1.42	1.45											
56	1.14	1.29	1.32	1.36	1.39	1.43											
57	1.12	1.26	1.30	1.33	1.37												
58	1.10	1.24	1.28	1.31	1.34												
59	1.08	1.22	1.25	1.29													
60	1.07	1.20	1.23	1.27													
61	1.05	1.18	1.21														
62	1.03	1.16	1.19														
63	1.02	1.14															

Calculating FDR =  $\frac{\text{Spur}}{\text{Pinion}}$

Calculating Pinion =  $\frac{\text{Spur}}{\text{FDR}}$

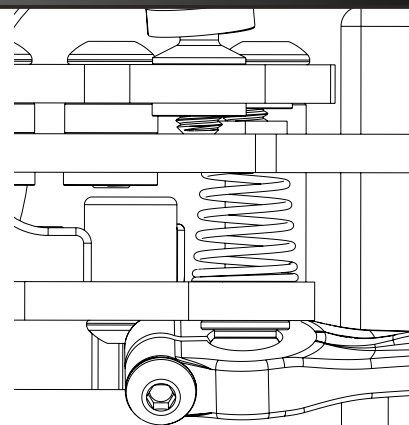
Calculating Spur = FDR X Pinion



### Roll Spring

Roll springs are used to control the car's balance. A softer spring will generally give an easier to drive car, however, if too soft, corner entry stability will be compromised. Stiffer roll springs can be used to give a more aggressive steering car. The standard setting has the roll springs uncompressed and both just touching the lower pod plate when the car is stationary. Screwing them downward and compressing the springs creates more steering while loosening them gives an easier to drive car.

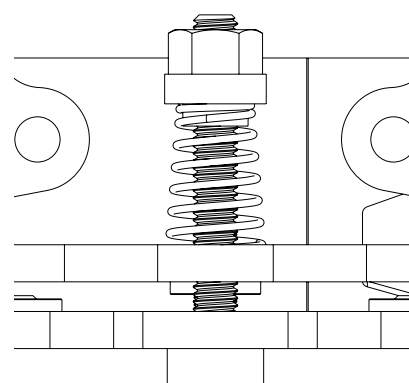
Adjusting the springs allows the tweak to be infinitely adjusted. Ensure they are not set too unevenly. If more than 0.5mm different, further investigation is required.



### Bump Spring

This spring is used to set the pod angle. Adjust the spring tension so that the pod is horizontal when the car is on a flat surface. This gives the kit setting with zero anti-squat or pro-squat.

A harder bump spring can give less initial steering. A softer bump spring will give a more aggressive car entering the corner, more rear grip in the corner and improve the cars bump handling ability.

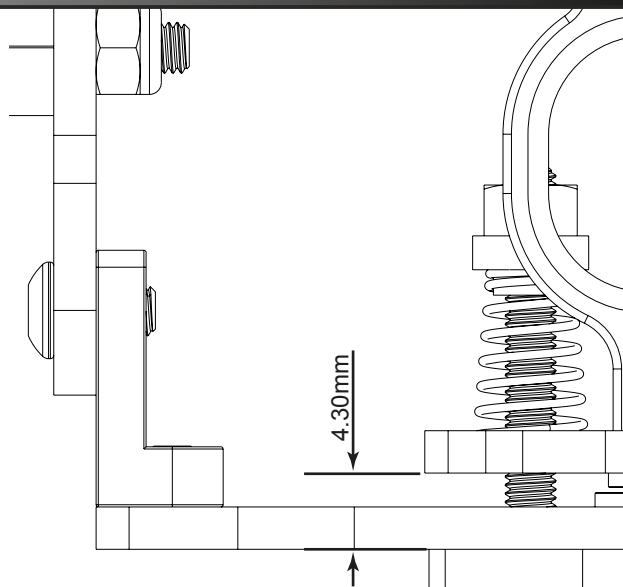


### Anti-squat

If the bump spring is screwed down further, the pod will no longer be horizontal. Angled down at the rear is Anti-squat. If the spring is unscrewed from horizontal, the pod will be angled forwards. This is Pro-squat.

Anti-squat resists the weight transfer in the rear under power. This will increase on power steering. Typically anti-squat may be used but pro-squat is rarely useful. Setting Anti-Squat can be done by setting this dimension using digital calipers.

4.3mm = 0° Anti-squat. A smaller dimension = More Anti-Squat.

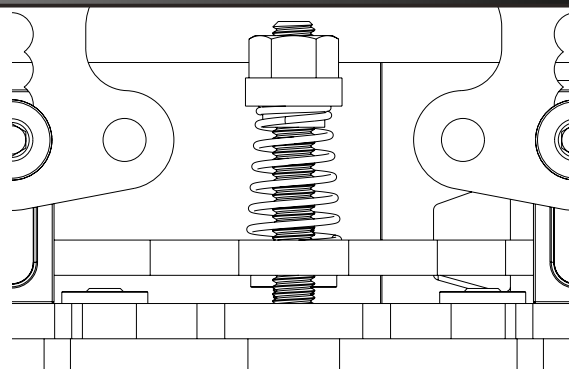


### Rear Droop

Rear droop adjusts the balance of the cars handling. Less droop makes the car more aggressive, squaring up the turns. More droop gives less corner rotation but an easier to drive car. More droop also improves the car's bump handling.

Start with 1mm of droop.

To set this, start with the droop screw backed out and screw in to reduce droop. Measure this by measuring the car's rear ride height, then take all the weight off the car by lifting from the rear of the centre damper tube (the wheels must still just be touching the floor). Measure the chassis from the floor in this position and subtract the ride height to calculate the droop.

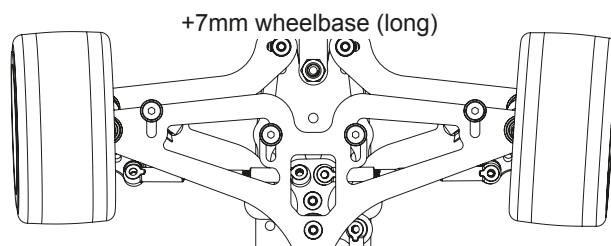
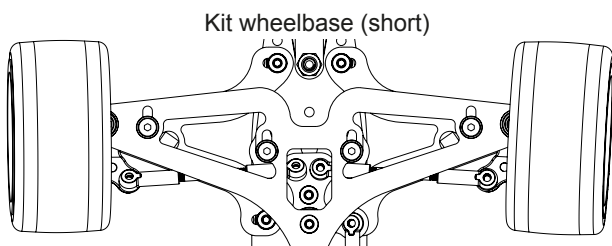


### Wheelbase

The icon has the option to adjust the front wheelbase by moving the front end assembly.

A shorter wheelbase will give the car more steering but will be more unstable, especially at high speed.

A longer wheelbase will make the car more stable at high speed but will have less steering in the hairpins.



### Roll Centre Adjustment (Option Parts Required)

When using the alloy speed secret pivot parts (U7918 and U7919) the roll centre can be adjusted by adding or removing spacers from below the alloy pivot mount and alloy pivot block.

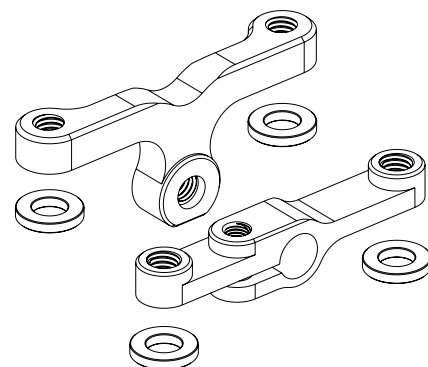
Lowering the roll centre (removing spacers) will give the car more grip and increase chassis roll.

Raising the roll centre (adding spacers) will increase steering by making the car rotate more from the rear.

The alloy pivot mount and block need a 1mm spacer in order to maintain kit roll centre.

**MUST have equal spacers beneath both parts.**

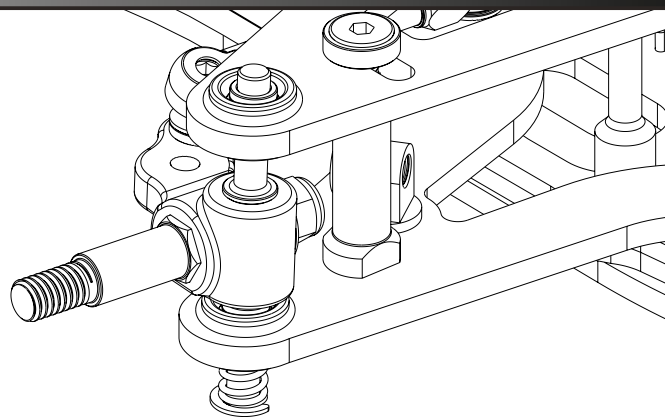
Racers Tip: Using U7897 1mm Alloy Pivot Spacer can make this adjustment much easier. Please note: These must both be inserted from the front side.



### Front Springs

Softer springs will ride the bumps better and generally allow the car to roll more which can increase steering, especially in the middle of the corner.

Harder springs make the car more responsive and are more suitable for high grip tracks. They will generally increase initial steering but improve mid corner stability.

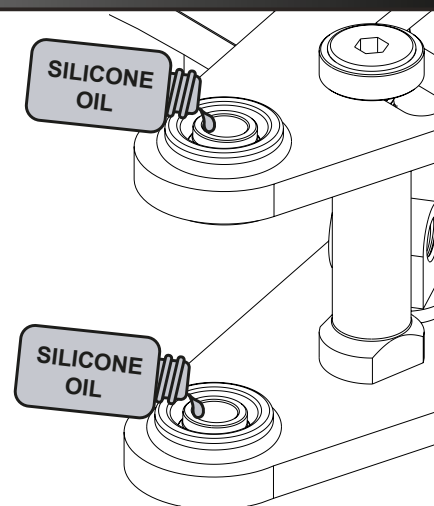


### Front Damping

Front damping can be used to tune the car depending on the track traction levels.

Thicker oil on the kingpin generally always gives a less responsive, easier to drive car. Too thick oil on the kingpin may lead to a 'lazy' feeling car which lacks corner speed.

We suggest a wide range of possibilities here starting from 12,000cSt - 50,000cSt

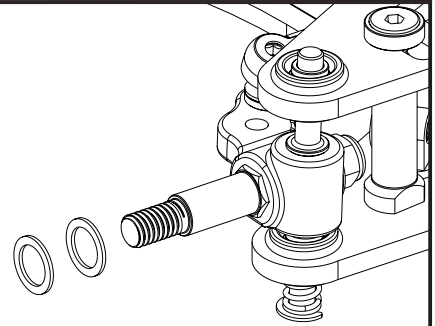


**Front Track Width**

Wider front track width will make the car easier to drive, provide less steering and give a slower response.  
Narrower front track width will make the car harder to drive, provide more steering and give a faster response.

Using the option part U8123 camber strap allows for a track width 6mm narrower when paired with the outer holes on the wishbones.

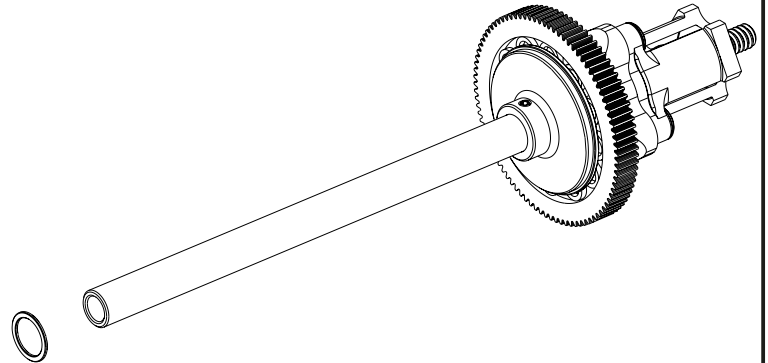
Using a 3mm wide bearing on the inside of the wheel can reduce the track width by 2mm. U4726 (Pro) or U7326 (Kit type)



**Rear Track Width**

Wider rear track width provides increased rear grip and an easier to drive car.  
Narrower rear track width increases corner speed and steering making the car harder to drive.

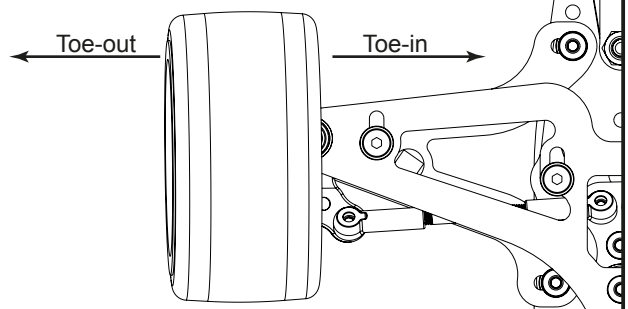
Kit rear width has a 0.5mm spacer on both sides. Remove or add spacers to suit (equally both sides).



**Toe-out**

Parallel front wheels or a slight Toe-out (up to 1 degree per side) is our suggested setting range.

Toe-out gives more initial steering. It does however make the car more difficult to drive on the straight, due to increased responsiveness.

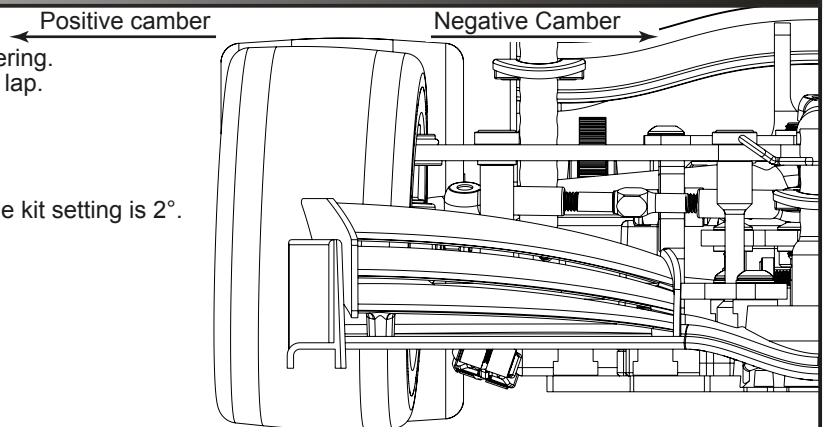


**Camber**

Increasing the negative camber angle will increase the car's steering. This will make the car more difficult to drive but often faster on a lap.

Reducing the negative camber angle is a good setting change if traction roll is a problem.

Option part U8124 camber strap Offers 1.5° camber where as the kit setting is 2°.



**Caster**

Increasing the caster angle will give slightly smoother turn in, but generally more steering.  
By measuring X you can calculate the caster using the below tables. A 0.40mm shift is 1° of caster.

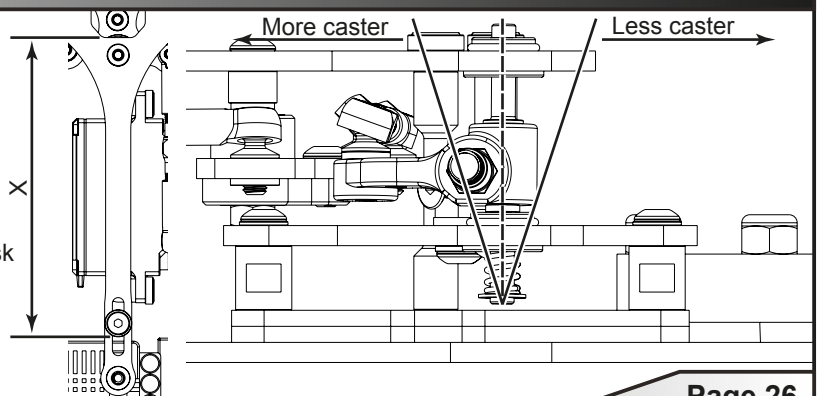
Long Wheelbase

x mm	caster
83.9	0°
83.5	2°
82.7	4°
81.9	6°
81.1	8°
80.3	10°
79.5	12°

Short Wheelbase

x mm	caster
76.9	0°
76.5	2°
75.7	4°
74.9	6°
74.1	8°
73.3	10°
72.5	12°

'X' is measured from the C/F face as shown to the rear side of the csk washer.





**3 Layer Soft Shell Team Jacket - Black**

- G339XS Extra Small - 34 inch chest
- G339S Small - 38 inch chest
- G339M Medium - 41 inch chest
- G339L Large - 44 inch chest
- G339XL X Large - 46 inch chest
- G339XXL XX Large - 48 inch chest
- G339XXXL XXX Large - 50 inch chest



**Schumacher Winter Jacket**

- G318S Small 36-38 inch
- G318M Medium 38-41 inch
- G318L Large 42-44 inch
- G318XL X Large 44-47 inch
- G318XXXL XX Large 48-50 inch



**Schumacher Arrows Hoody**

- G348XS Extra Small
- G348S Small
- G348M Medium
- G348L Large
- G348XL X Large
- G348XXL XX Large
- G348XXXL XXX Large



**Schumacher Arrows T-Shirt**

- G347XXS XX SMALL
- G347XS X Small
- G347S Small
- G347M Medium
- G347L Large
- G347XL X Large
- G347XXL XX Large
- G347XXXL XXX Large
- G347XXXXL XXXX Large
- G347XXXXXL XXXXX Large
- G347XXXXXXL XXXXXX Large



**Schumacher Gilet - Frost Grey**

- G346S Small
- G346M Medium
- G346L Large
- G346XL X-Large
- G346XXL XX-Large



**Schumacher Safety Mask**

G363 - Schumacher Safety Mask - Dark Blue



**Schumacher Snapback Flatbill Cap - Heather**

G360 One Size Fits All



**Schumacher Arrows Polo Shirt**

- G350S Small
- G350M Medium
- G350L Large
- G350XL X Large
- G350XXL XX Large
- G350XXXL XXX Large
- G350XXXXL XXXX Large
- G350XXXXXL XXXXX Large



**Schumacher Arrows Zipped Hoody**

- G349S Small
- G349M Medium
- G349L Large
- G349XL X Large
- G349XXL XX Large



**Schumacher Flexfit Cap - Grey**

- G361 Small / Medium
- G362 Large / X Large



**Towels**

G315 Schumacher Pit Towel

**Driver Details**

Name \_\_\_\_\_  
 Date \_\_\_\_\_  
 Event / Track \_\_\_\_\_  
 Weather \_\_\_\_\_  
 Result \_\_\_\_\_

**Notes**



**Chassis and Electrics**

Chassis Kit  Alloy   
 Car Weight \_\_\_\_\_ g  
 Wheelbase Kit  Long   
 Bodyshell \_\_\_\_\_  
 Front Wing \_\_\_\_\_  
 Rear Wing \_\_\_\_\_  
 ESC \_\_\_\_\_  
 Servo \_\_\_\_\_  
 Receiver \_\_\_\_\_  
 LiPo \_\_\_\_\_ Under LiPo Weight \_\_\_\_\_ g

**Track Conditions**

Grip Level High  Med  Low   
 Type Tight  Open  Mixed   
 Surface Carpet  Tarmac   
 Condition Smooth  Bumpy

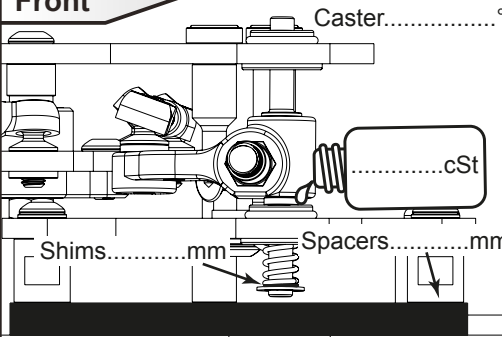
**Motor and Gearing**

Motor \_\_\_\_\_  
 Rotor Diameter \_\_\_\_\_ mm  
 Timing \_\_\_\_\_ Deg  
 Spur \_\_\_\_\_ Pinion \_\_\_\_\_

**Wheels, Tyres and Inserts**

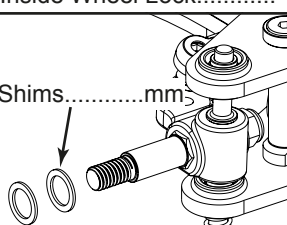
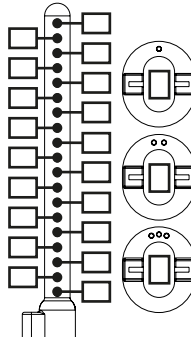
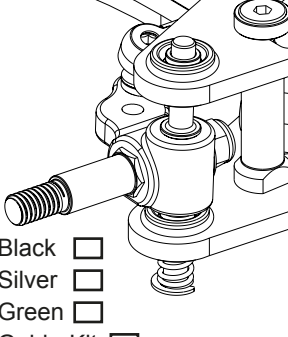
Wheels \_\_\_\_\_  
 Tyres \_\_\_\_\_  
 Inserts \_\_\_\_\_  
 Tyre Additive \_\_\_\_\_  
 Additive Time Front \_\_\_\_\_ Minutes Rear \_\_\_\_\_ Minutes  
 Tyre Warmers Yes  No  Temp \_\_\_\_\_ °C Time \_\_\_\_\_ Minutes

**Front**



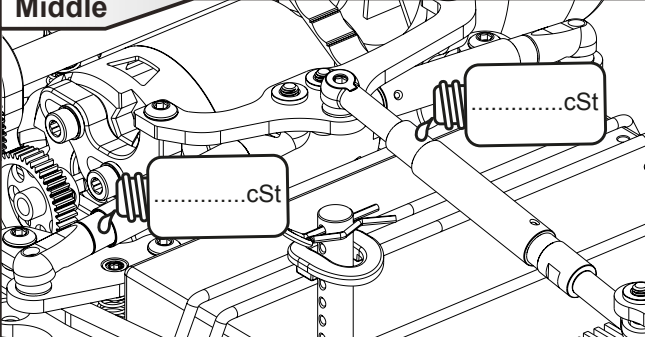
Caster.....°  
 Shims.....mm Spacers.....mm  
 .....cSt

Ride Height.....mm  
 Droop.....mm  
 Toe-out.....°  
 Inside Wheel Lock.....°  
 Shims.....mm

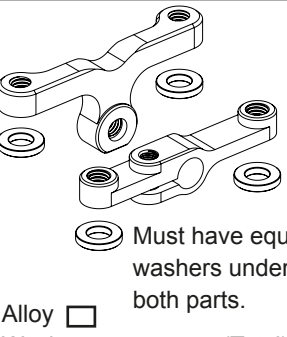




Black   
 Silver   
 Green   
 Gold - Kit

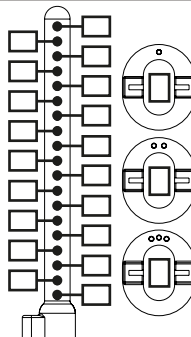
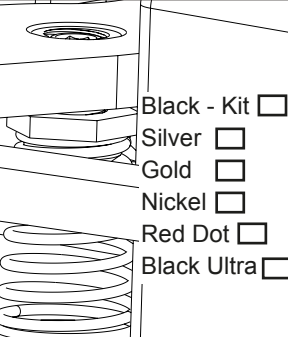
**Middle**



.....cSt

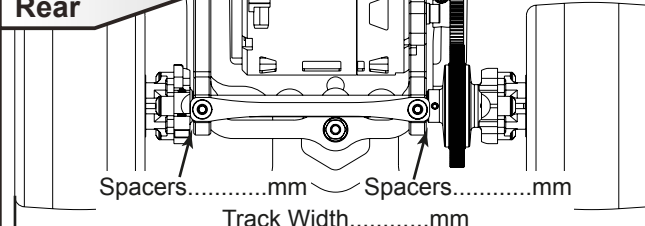


Must have equal washers under both parts.  
 Alloy   
 Washers.....mm (Total)

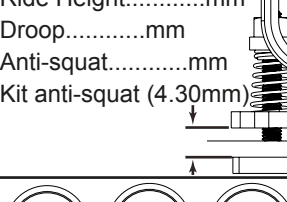
Black - Kit   
 Silver   
 Gold   
 Nickel   
 Red Dot   
 Black Ultra

**Rear**

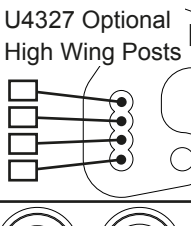
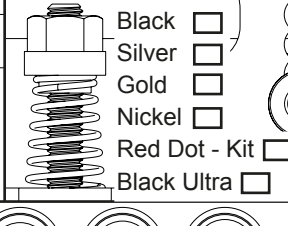


Spacers.....mm Spacers.....mm  
 Track Width.....mm

Ride Height.....mm  
 Droop.....mm  
 Anti-squat.....mm  
 Kit anti-squat (4.30mm)

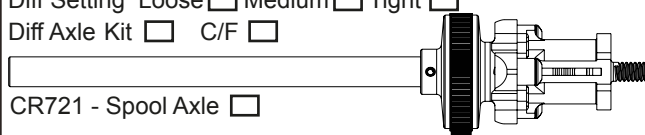
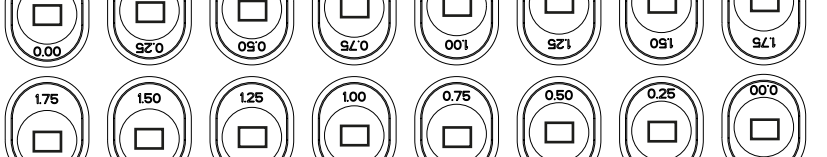


U4327 Optional High Wing Posts

Black   
 Silver   
 Gold   
 Nickel   
 Red Dot - Kit   
 Black Ultra

Diff Setting Loose  Medium  Tight   
 Diff Axle Kit  C/F   
 CR721 - Spool Axle

### Driver Details

Name *Test Driver*

Date

Event / Track

Weather

Result

### Notes



*This is the kit build setup.*

### Chassis and Electrics

Chassis Kit  Alloy

Car Weight *1050* g

Wheelbase Kit  Long

Bodyshell *Montech F18*

Front Wing *Kit*

Rear Wing *Kit*

ESC *Hobbywing XR10 Pro G2 Elite*

Servo *Highest DLP650*

Receiver *Sanwa*

LiPo *LRP 4100mAh* Under LiPo Weight g

### Track Conditions

Grip Level High  Med  Low

Type Tight  Open  Mixed

Surface Carpet  Tarmac

Condition Smooth  Bumpy

### Motor and Gearing

Motor *LRP 21.5T*

Rotor Diameter *STD* mm

Timing *40°* Deg

Spur *88T* Pinion *40T*

### Wheels, Tyres and Inserts

Wheels *Pit Shimizu*

Tyres *Pit Shimizu*

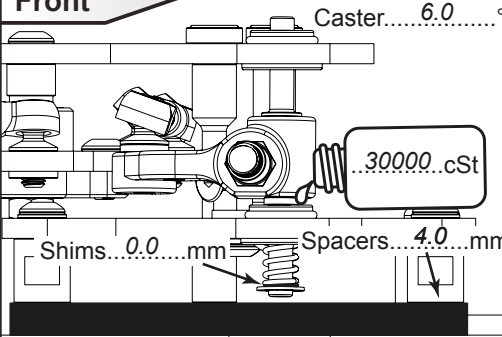
Inserts *Pit Shimizu*

Tyre Additive *MR33 V3*

Additive Time Front *10* Minutes Rear *20* Minutes

Tyre Warmers Yes  No  Temp *70 °C* Time *10* Minutes

### Front



Caster... *6.0* °

Shims... *0.0* mm Spacers... *4.0* mm

30000...cSt

12g  23g  Red  Green

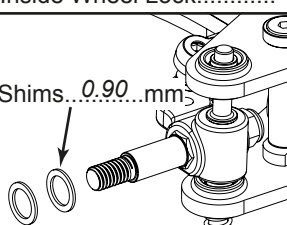
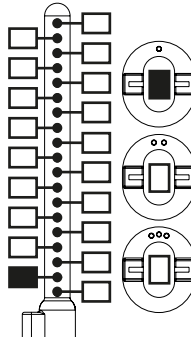
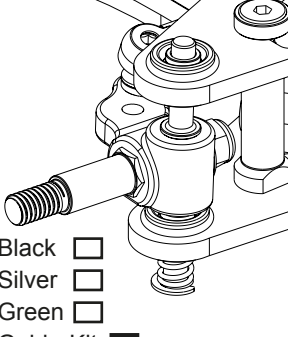
Ride Height... *4.5* mm

Droop... *0.5* mm

Toe-out... *1.0* °

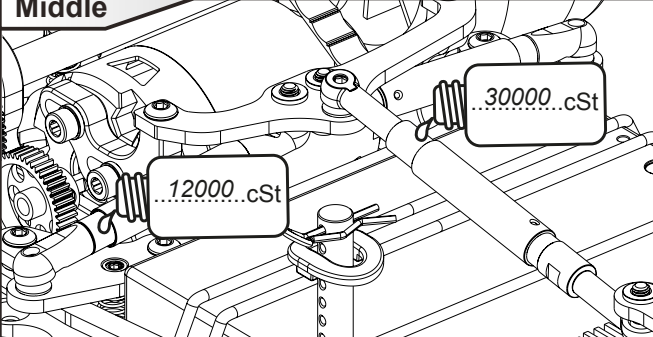
Inside Wheel Lock... *26.0* °

Shims... *0.90* mm

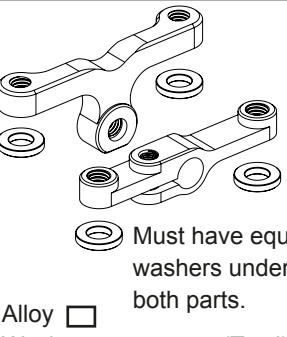
Black  Silver  Green  Gold - Kit

### Middle



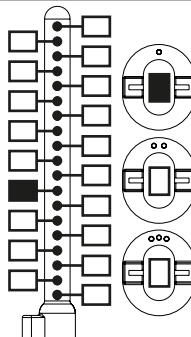
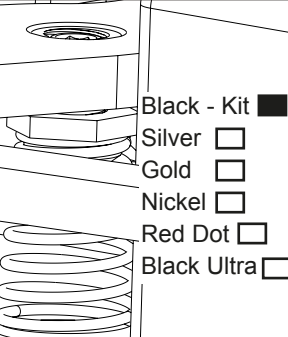
30000...cSt

12000...cSt



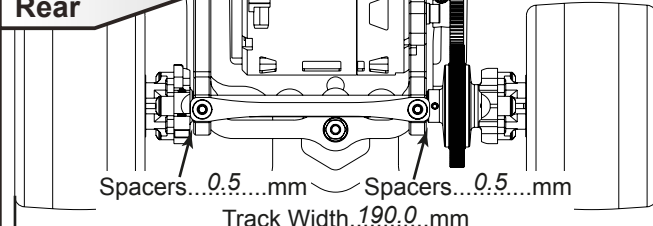
Must have equal washers under both parts.

Alloy  Washers... mm (Total)

Black - Kit  Silver  Gold  Nickel  Red Dot  Black Ultra

### Rear



Spacers... *0.5* mm Spacers... *0.5* mm

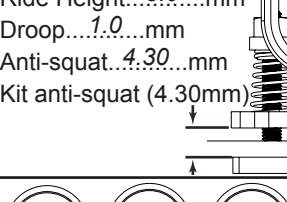
Track Width... *190.0* mm

Ride Height... *5.0* mm

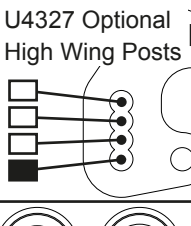
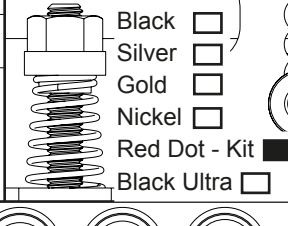
Droop... *1.0* mm

Anti-squat... *4.30* mm

Kit anti-squat (4.30mm)



U4327 Optional High Wing Posts

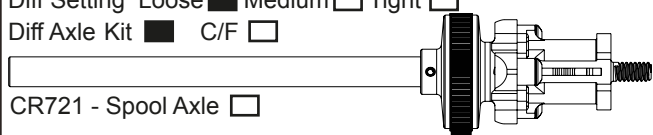
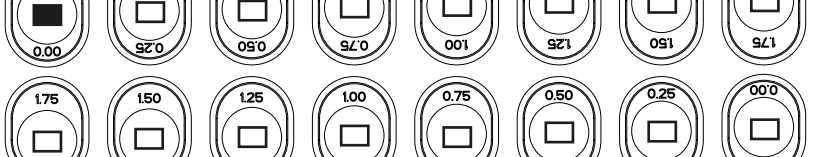



Black  Silver  Gold  Nickel  Red Dot - Kit  Black Ultra

Diff Setting Loose  Medium  Tight

Diff Axle Kit  C/F

CR721 - Spool Axle

0.00 0.25 0.50 0.75 1.00 1.25 1.50 1.75

0.00 0.25 0.50 0.75 1.00 1.25 1.50 1.75